

# National Ocean Service

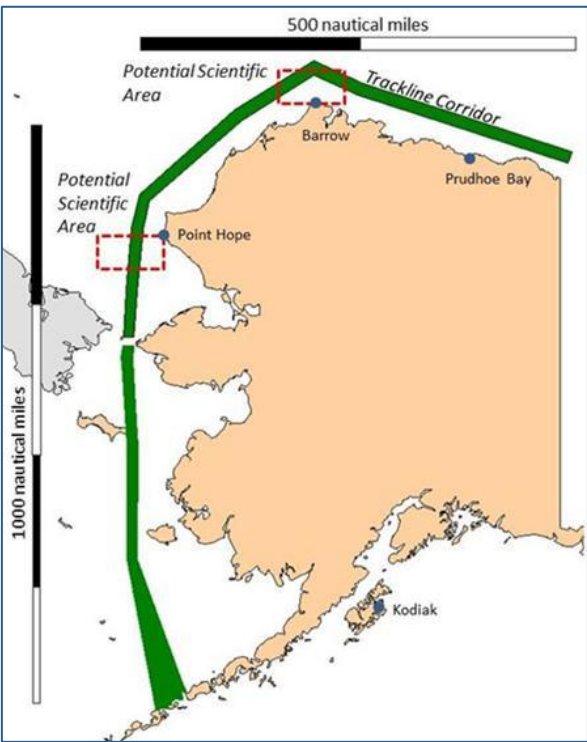
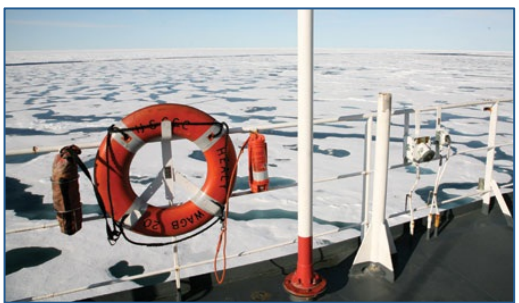
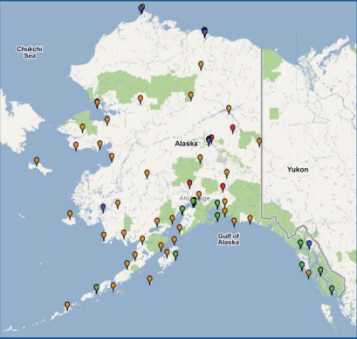
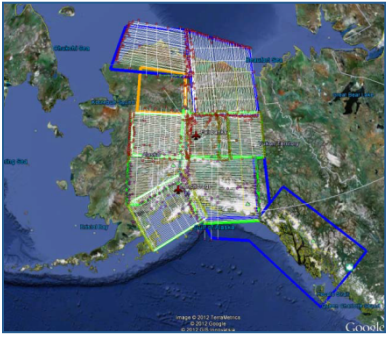
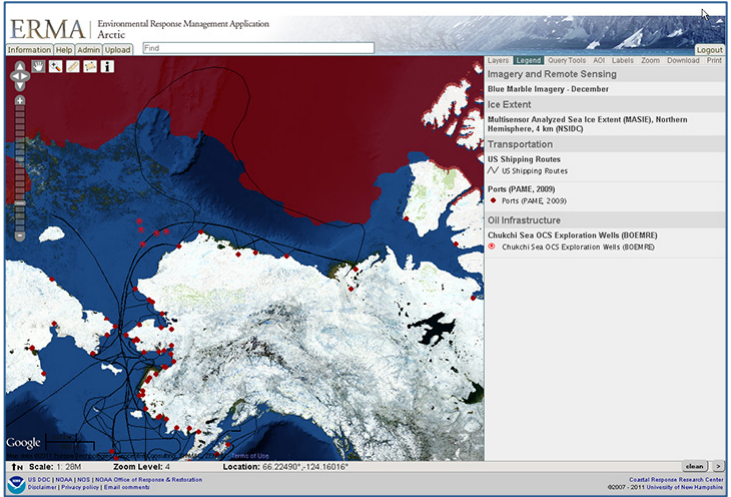
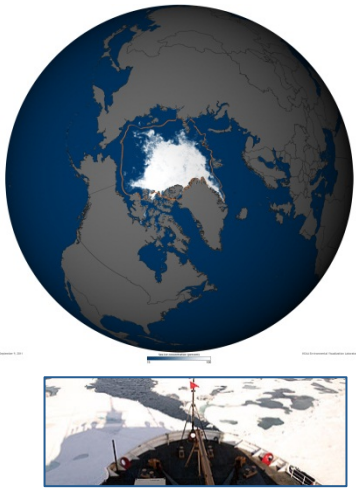
HSRP FAC Meeting • November 27 , 2012

# Performance in action

- 208 counties
- 3,500 square nautical miles
- 1,900 people
- 63 miles
- \$35 return for every \$1 invested
- 27 million hits
- 82% of surveys



# Positioning America for the Future: Arctic



**Conceptual Model of Arctic Oil Spill Exposure and Injuries**

**Wetlands, low coastal tundra, lagoons, ponds, rivers, streams, and spawning areas.**  
Highly productive.  
**OIL IMPACT:** Oils, dispersed or emulsified, reduce production.

**Pelagic Zone**  
Productive area for food web.  
**OIL IMPACT:** Surface and dispersed oil affects food web. Fish eggs and larvae are especially sensitive.

**Benthos**  
Can be highly productive, dependent on existing resources.  
**OIL IMPACT:** Oils in sediments reduce productivity and affects food web.

**Top Predators**  
Large marine and land populations are at greatest risk.  
**OIL IMPACT:** Oil can reduce health effects and disrupt food web.

**Ice Habitat**  
Essentially important habitat for marine mammals.  
**OIL IMPACT:** Difficulty in being poorly studied.

Impacts of an Arctic oil spill will vary due to environmental conditions, spill severity and response capacity.

© 2011 NOAA. Reprinted by permission.



**AOOS**  
Alaska Ocean Observing System



# Positioning America for the Future: Preparation, Response, Resilience

