

KATRINA / RITA Clearinghouse

John C. Pine
Interim Chair, Department of GEOG & ANTH
Director of Disaster Science & Management
Louisiana State University





HURRICANE KATRINA & RITA

Information Clearinghouse

General	Data	Contribute	More Information
---------	------	------------	------------------

:: ABOUT THE SITE

This clearinghouse has been established at the Louisiana State University, Baton Rouge to facilitate the collection, dissemination, and archiving of data related to Hurricane Katrina and Rita. Katrina made landfall in Louisiana on Monday, August 29, 2005 and Rita made landfall on September 24, 2005.

:: SPONSORS

- [Louisiana State University](#)
- [CADGIS Research Laboratory, LSU](#)
- [Federal Emergency Management Agency](#)
- [Hurricane Center, LSU](#)
- [World Health Organization Colloborating Center, LSU](#)
- [Louisiana Geological Survey](#)

:: DOWNLOADS

Map Products, Reports & Data Downloads

[Morbidity & Mortality Weekly Report from CDC/Jan 20,2006 issue](#) **New! Added 01/19/06**

[St.Mary, Vermillion & Lafourche Parishes DFIRM added](#)
Added 01/10/06

[NOAA's Raster Navigational Charts - Download site](#) (Web link)
Added 01/03/06

[More...](#)

Data Server & Websites

GIS Store
Information on the 20 TB data server housed in LSU for hurricane related efforts; available data etc. [More...](#)
[Available Data](#) **New!**

Atlas, The Louisiana Statewide GIS

:: CONTACT

Contact information for various programs areas are available here.

:: [Program Coordination](#)

:: [FEMA Coordinators](#)

:: [Remote Sensing](#)

:: [Webmaster/GIS Data](#)

:: [Mapping Sciences & Analysis](#)

:: [Hurricane Storm Surge](#)

:: [Hurricane Winds](#)

:: [Public Health Impacts](#)

:: [Environmental Impacts & Environmental Quality](#)

:: [Social, Cultural & Economic Impacts](#)

:: [Cultural & Heritage Impacts](#)

:: NEWS

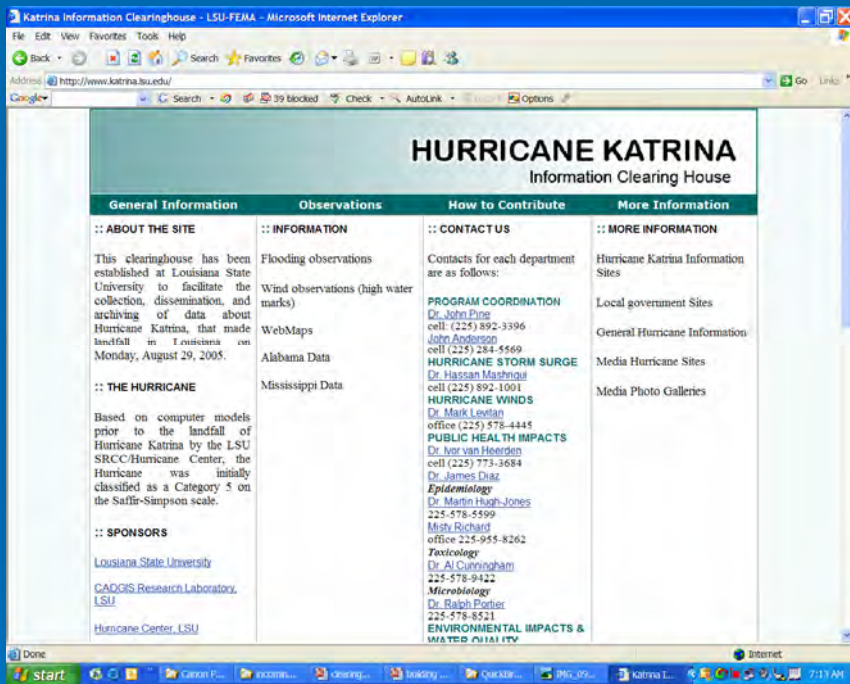
New! 12/21/05
FEMA-Store.lsu.edu is now officially **GIS-Store.lsu.edu**. Please change all file references and designations to GIS-Store.lsu.edu. The FEMA-Store.lsu.edu name will continue for a while longer, but it will disappear sometime in January. [More...](#)

:: PHOTO GALLERIES

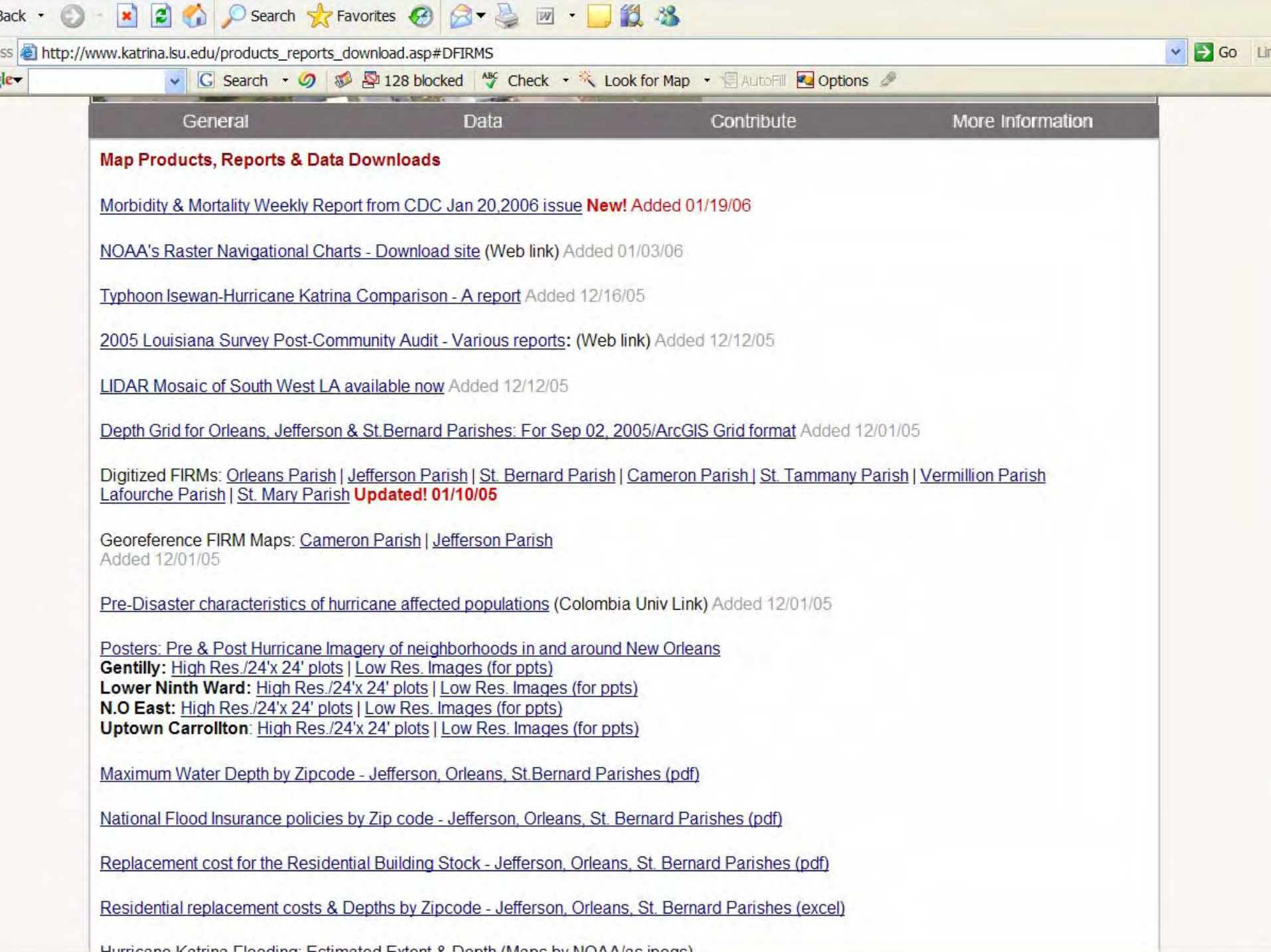


View images from hurricanes Katrina & Rita

Clearinghouse Functions



- DATA Storage
- Internet Access to Data
- Download Capabilities
 - Raster & vector GIS data
 - Documents - reports
 - Data (spreadsheets – posters)
- Software (Terrashare)
- Training Programs
- Research Space for Visiting Collaborators



Map Products, Reports & Data Downloads

- [Morbidity & Mortality Weekly Report from CDC Jan 20, 2006 issue](#) **New!** Added 01/19/06
- [NOAA's Raster Navigational Charts - Download site](#) (Web link) Added 01/03/06
- [Typhoon Isewan-Hurricane Katrina Comparison - A report](#) Added 12/16/05
- [2005 Louisiana Survey Post-Community Audit - Various reports:](#) (Web link) Added 12/12/05
- [LIDAR Mosaic of South West LA available now](#) Added 12/12/05
- [Depth Grid for Orleans, Jefferson & St. Bernard Parishes: For Sep 02, 2005/ArcGIS Grid format](#) Added 12/01/05
- Digitized FIRMs: [Orleans Parish](#) | [Jefferson Parish](#) | [St. Bernard Parish](#) | [Cameron Parish](#) | [St. Tammany Parish](#) | [Vermillion Parish](#) | [Lafourche Parish](#) | [St. Mary Parish](#) **Updated! 01/10/05**
- Georeference FIRM Maps: [Cameron Parish](#) | [Jefferson Parish](#)
Added 12/01/05
- [Pre-Disaster characteristics of hurricane affected populations](#) (Colombia Univ Link) Added 12/01/05
- Posters: [Pre & Post Hurricane Imagery of neighborhoods in and around New Orleans](#)
Gentilly: [High Res./24'x 24' plots](#) | [Low Res. Images \(for ppts\)](#)
Lower Ninth Ward: [High Res./24'x 24' plots](#) | [Low Res. Images \(for ppts\)](#)
N.O East: [High Res./24'x 24' plots](#) | [Low Res. Images \(for ppts\)](#)
Uptown Carrollton: [High Res./24'x 24' plots](#) | [Low Res. Images \(for ppts\)](#)
- [Maximum Water Depth by Zipcode - Jefferson, Orleans, St. Bernard Parishes \(pdf\)](#)
- [National Flood Insurance policies by Zip code - Jefferson, Orleans, St. Bernard Parishes \(pdf\)](#)
- [Replacement cost for the Residential Building Stock - Jefferson, Orleans, St. Bernard Parishes \(pdf\)](#)
- [Residential replacement costs & Depths by Zipcode - Jefferson, Orleans, St. Bernard Parishes \(excel\)](#)
- [Hurricane Katrina Flooding: Estimated Extent & Depth \(Maps by NOAA/arc images\)](#)



Photo Library

Atlas: The Louisiana Statewide GIS

Welcome to Atlas! Here you will find geospatial data for the state of Louisiana.

[Search Atlas](#)

Search to find mapping data such as Tiger files, geotiff images, and flood data including data from the Louisiana GIS CD!

[Download Data](#)

Use live index maps to download DEMs, DRGs and DOQQs for Louisiana!
Another 293 Panels of 2004 DOQQ Images Are Available!

[Explore Louisiana](#)

Explore Louisiana using digital data.

[Read about Atlas](#)

Read about the latest news about GIS in Louisiana and about Atlas itself.

Atlas was last updated on Saturday, September 24, 2005. Previous update was Tuesday, September 6, 2005

To view the Atlas privacy statement, [click here](#).

First time Webmap users

[Please read!](#) (Updated for the JMapView Java applet.)

First time DOQQ users

Need some help? [Click here](#). (Not yet updated for the DOQQ 2004 images.)

Use Your Desktop GIS as an Interface to Atlas

For more information, [click here](#).

More 2004 DOQQ Images Available!

Another 293 Panels of 2004 DOQQs Are Now Available!

Another 293 panels of 2004 DOQQ images were added to Atlas on Saturday, September 24, 2005. These panels cover most of Louisiana that falls within UTM zone 16 - the area east of 90 degrees west longitude. To go directly to the 2004 DOQQ downloader, click <http://atlas.lsu.edu/doqq2004>.

Katrina Information

Visit the Katrina Clearinghouse Web Site at <http://katrina.lsu.edu>

DOQQs Can Be Ordered on CDs or DVDs

For more information about ordering DOQQ images on CDs or DVDs, [click here](#).

Data on CDs

[Click here](#) for more information.

Arkansas-Mississippi-Texas Data



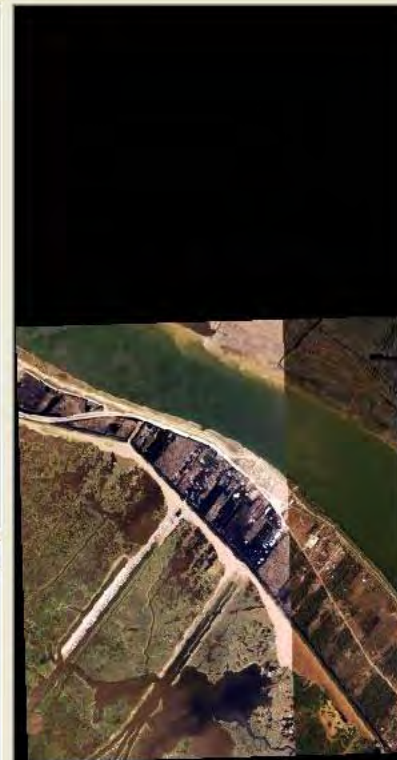
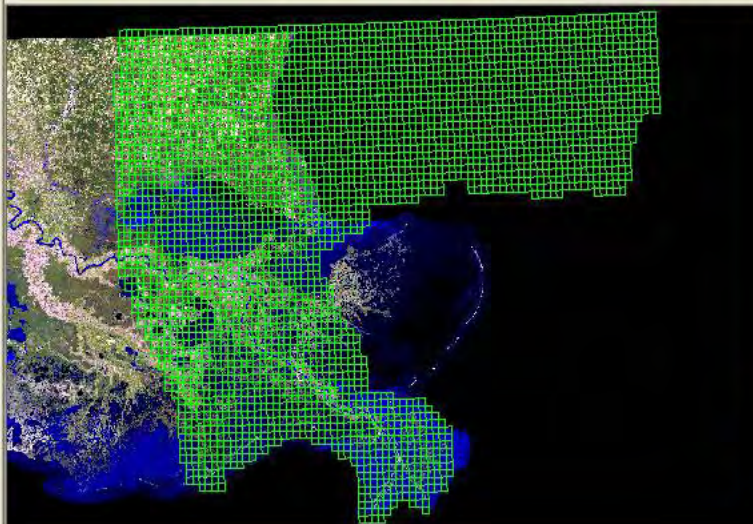
Need digital mapping data for Arkansas, Mississippi, or Texas? [Click here](#).

AtlasAlert!



- Desktop
 - My Documents
 - My Computer
 - My Network Places
 - Recycle Bin
 - TerraShare
 - ADS40_Katrina_2005_3001Inc_READY_FOR_USE
 - 28089
 - 29088
 - 29089
 - 29090
 - 30087
 - 30088
 - 30089
 - 30090
 - 31087
 - 31088
 - 31089
 - 31090
 - DOQQs 1998 By Parish_READY_FOR_USE
 - DOQQs 1998_READY_FOR_USE
 - DOQQs 2004_READY_FOR_USE
 - DRGs 100K_Ready for Use
 - DRGs 24K_Ready for Use
 - GE Imagery_Katrina_2005_Ready for Use
 - Ikonos_Katrina_2005_Being Updated
 - Image America_Katrina_2005_Ready for Use
 - LIDAR_DEMs_Ready for Use
 - Louisiana_Backdrops
 - NGIA Imagery_Katrina_Being Updated
 - NOAA_Katrina_LA_MS_Geotiffs
 - NOAA_Katrina_LA_MS_MrSID
 - QuickBird_226km res_READY_FOR_USE
 - TEMP_NOT_READY
 - TESTING ORTHOLOADER
 - z_HURRICANE RITA IMAGERY

Located Footprint: TerraShare File Online Sta Ground (m): 832634.966, 3198 Pixel:



Name	Value
User Metadata	
TerraShare M...	
ID	28690
Name	K_29089-E6_13.tif
GUID	{5F308718-2E6A-481E-80D5-5F874DD7B356}
ISISTypeID	1
Primary/ISISViewID	23259
OnlineStatusID	1
CreationDate	10/5/2005 12:34:36 PM
ModificationDate	10/5/2005 12:34:36 PM
FileSize	30.8967571258545
ThumbnailViewID	
FootprintID	50057
NativeFootprintID	50056
ISISFileID	28690
ImageTypeID	2
MainPFID	39706
GreenPFID	
BluePFID	
NumFiles	1
NumAuxFiles	0

Raster Portal

LSU - TerraShare® Raster Portal - Microsoft Internet Explorer

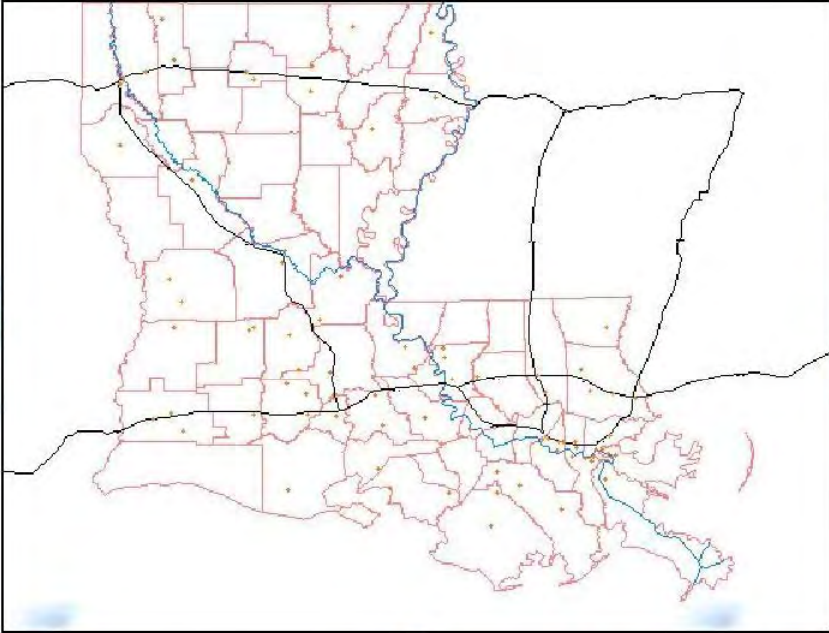
File Edit View Favorites Tools Help

Back Forward Stop Refresh Home Search Favorites RSS Print Mail News Groups

Address <http://rasterserver.lsu.edu/GWM.asp> Go Links

Google Search 44 blocked Check AutoLink AutoFill Options

Search the Web



Extract [Map Tools] [Scale: 0 to 200 km]

About the Application

LSU CADGIS TerraShare® Raster Portal

The LSU CADGIS TerraShare Raster Portal is a Web application written for LSU to assist with rapidly browsing, extracting, and downloading raster data from the multi-terabyte LSU raster repository. The Web application exploits the innovative enterprise data management capabilities of TerraShare and scalable Web dissemination capabilities of GeoMedia WebMap. These together allow users to browse to an area, then extract and download pertinent data in the projection and format of their choosing.

TerraShare®

TerraShare® is an enterprise infrastructure for geospatial data management and earth imaging production. TerraShare integrates storage infrastructure with end-user production and exploitation tools, enabling individuals and organizations to address their geospatial data management, access, and distribution needs effectively. This unique solution addresses the complete geospatial raster and elevation information life cycle within the enterprise.

For more information, visit the Intergraph /

Overview Statewide Overview -- Select Feature -- -- Select Column -- = -- No Data -- Query

start [Taskbar Icons] Internet 3:18 PM

Extract Raster Image

Layer:

Post_Katrina_3001_Imagery

Projection:

UTM-15 NAD83 (m)

Pixel Size:

1 meter

Image Size (pixels):

2Kx2K

Output Format:

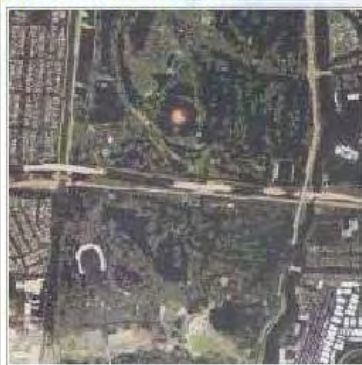
JPEG + World File

Preview

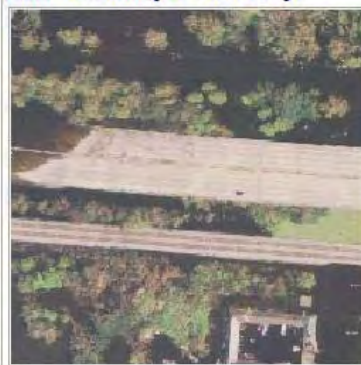
Extract

Image Preview

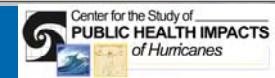
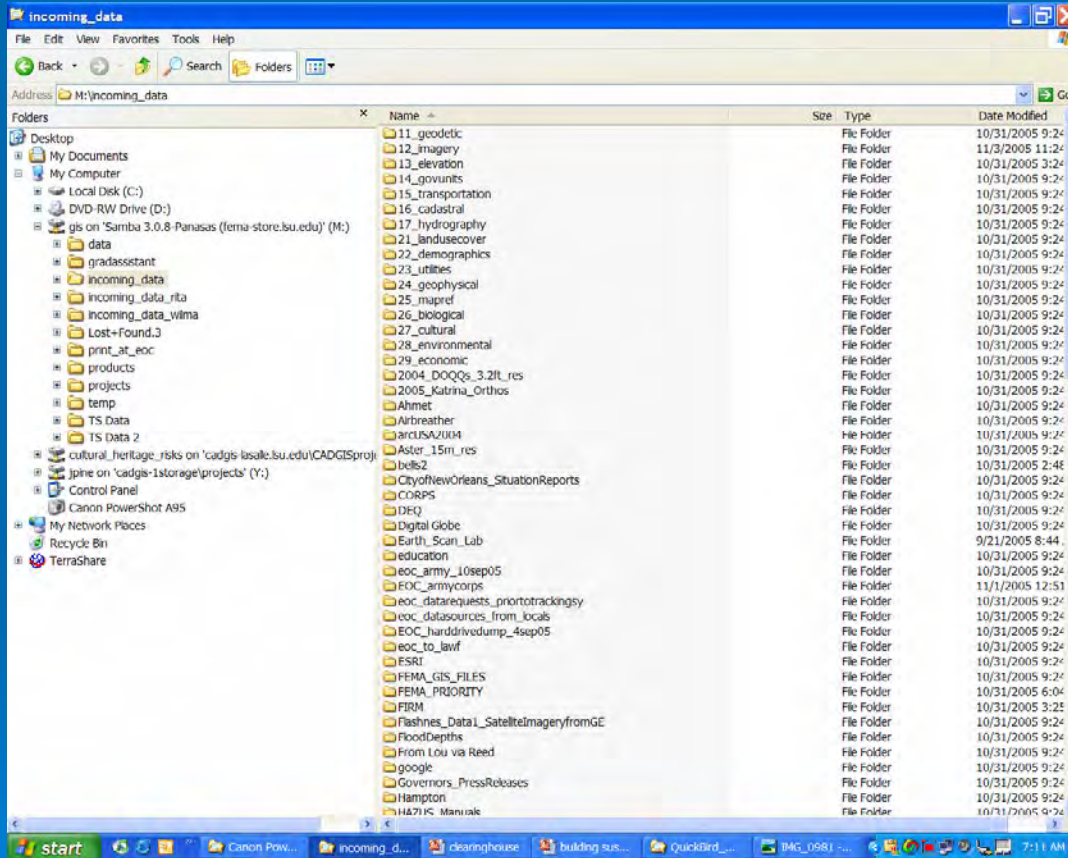
Extraction Preview:



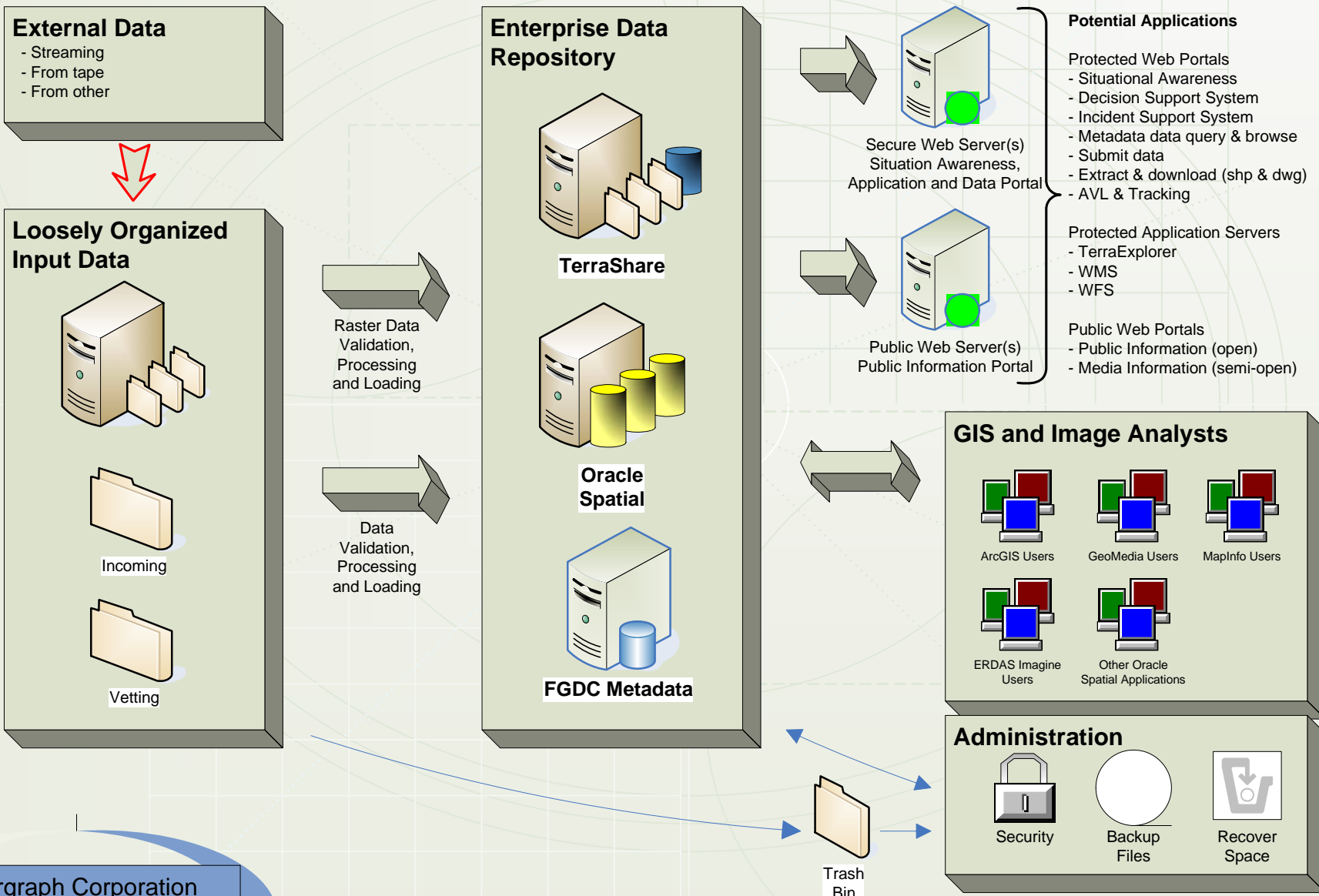
Full Detail (at center):



Remote Access to All Data via VPN Connection



Louisiana Enterprise Raster / Vector Data Clearinghouse



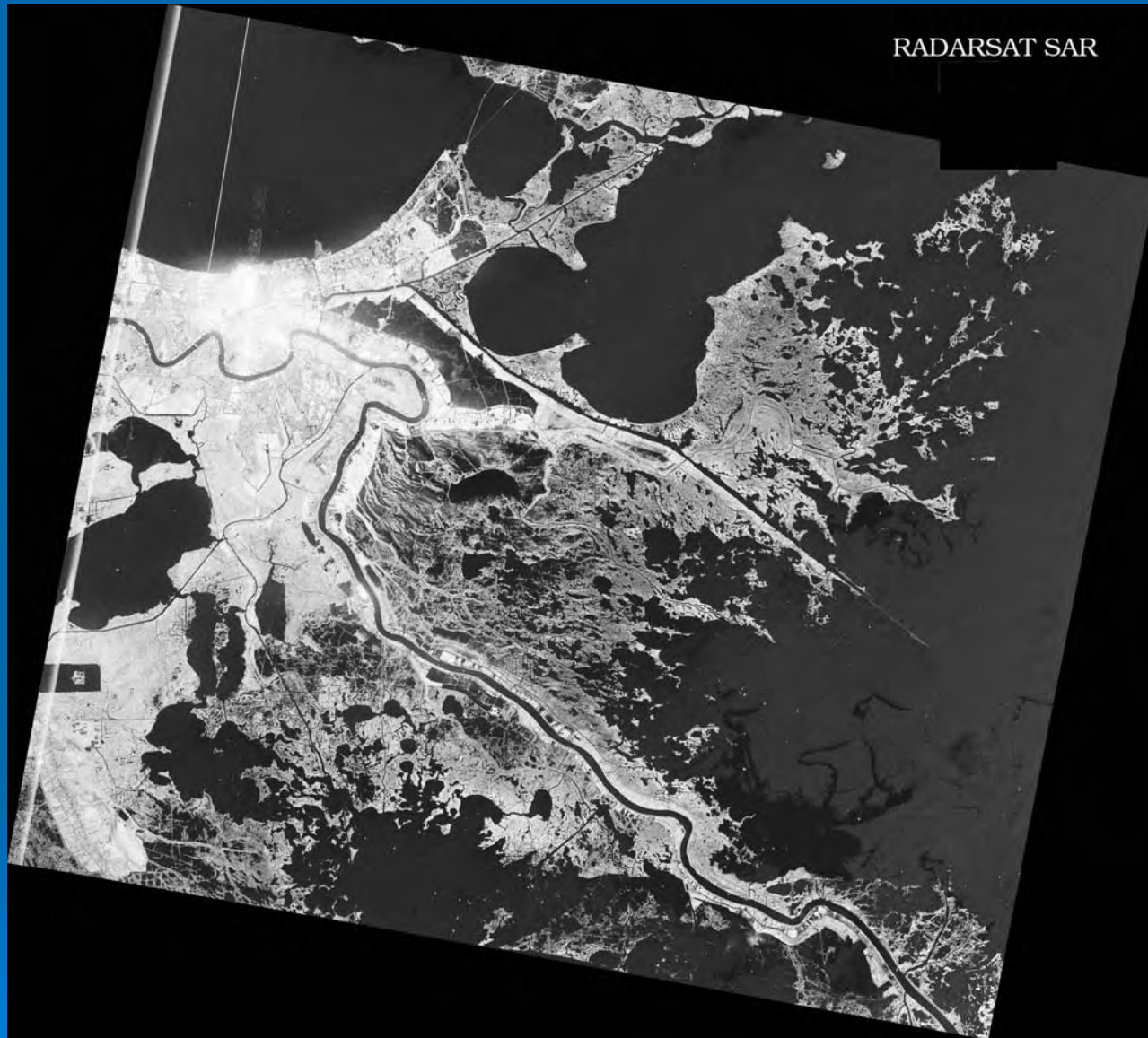


Hurricane Katrina

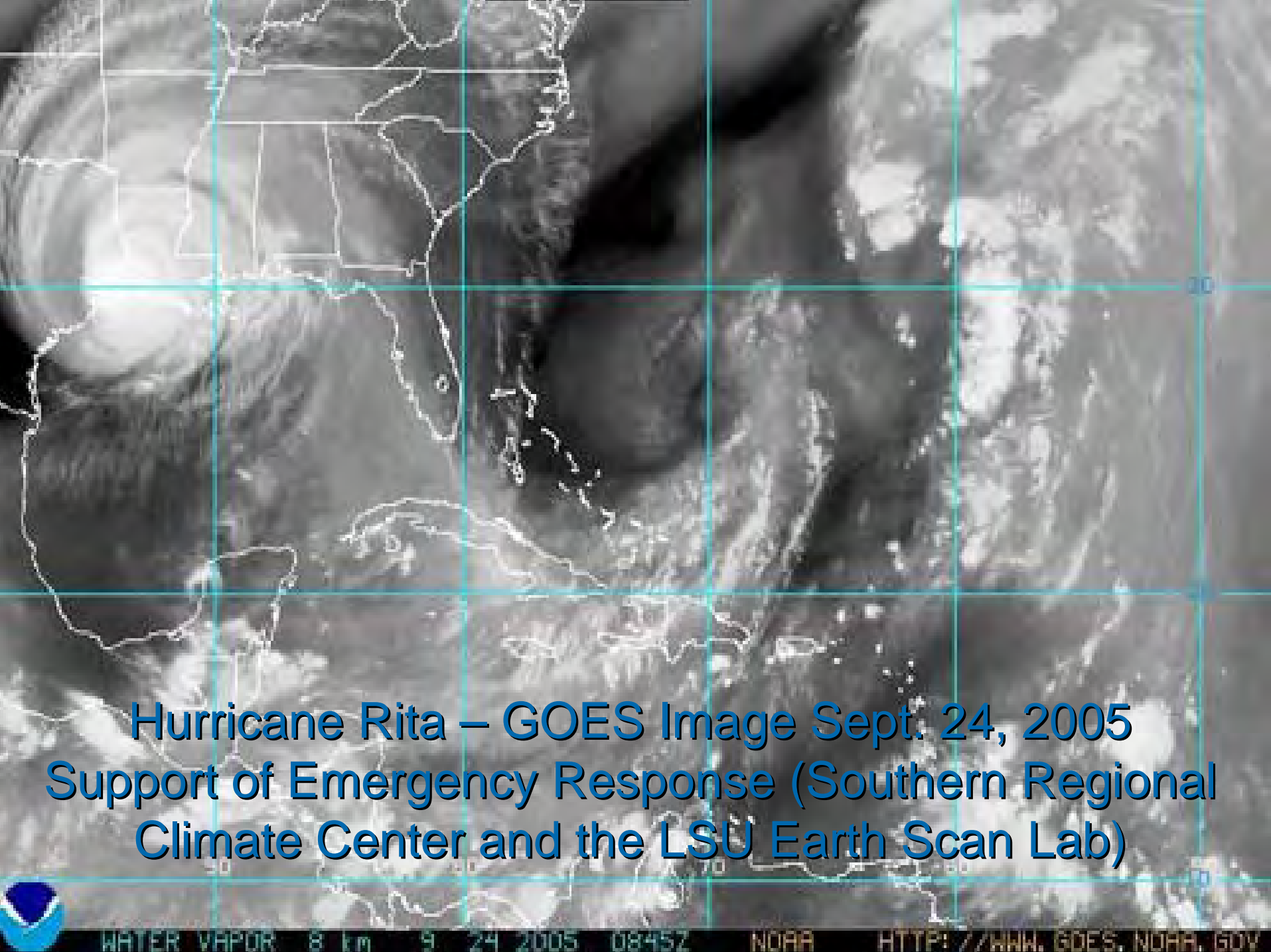


Hurricane Rita

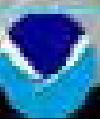
MODIS Image: Support of Emergency Response



- Radarsat: Emergency Response & Recovery - image showing oil spill

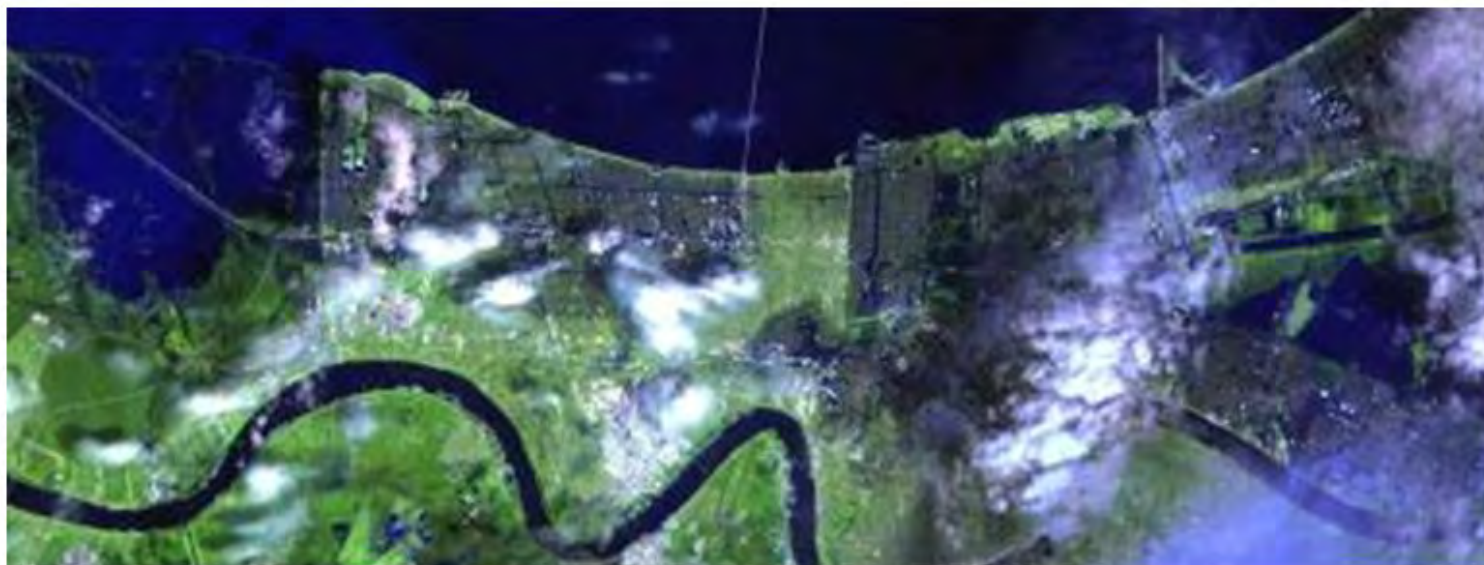


**Hurricane Rita – GOES Image Sept. 24, 2005
Support of Emergency Response (Southern Regional
Climate Center and the LSU Earth Scan Lab)**

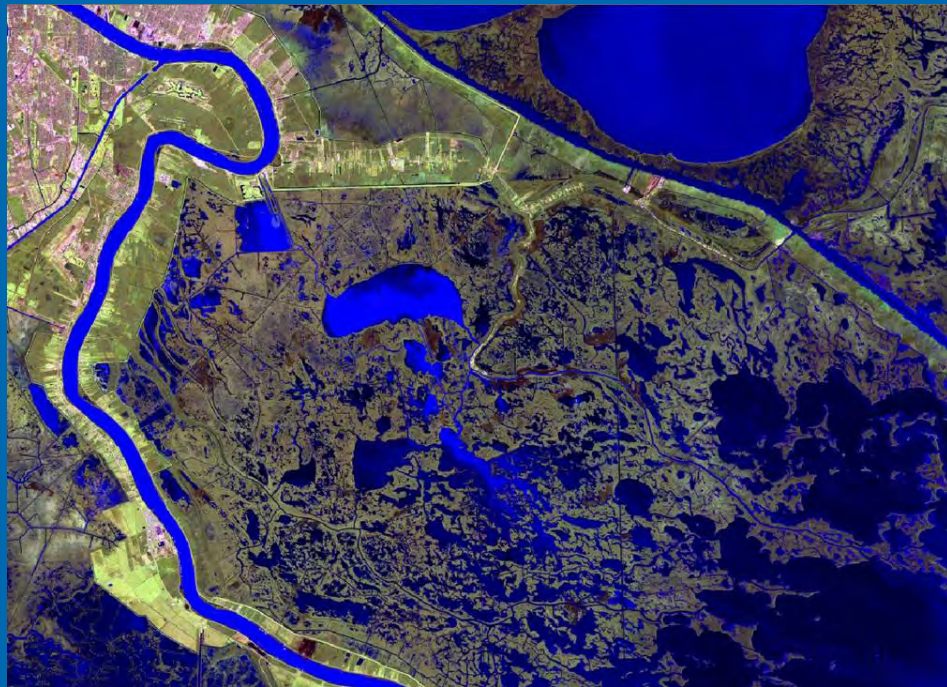




LANDSAT Image of April 2005
New Orleans, LA



LANDSAT Image of August 30, 2005
New Orleans, LA



Pre Katrina LANDSAT



Post Katrina LANDSAT

Support of Long Term Recovery
Environmental Impacts
Louisiana Sea Grant and Louisiana Recovery Authority

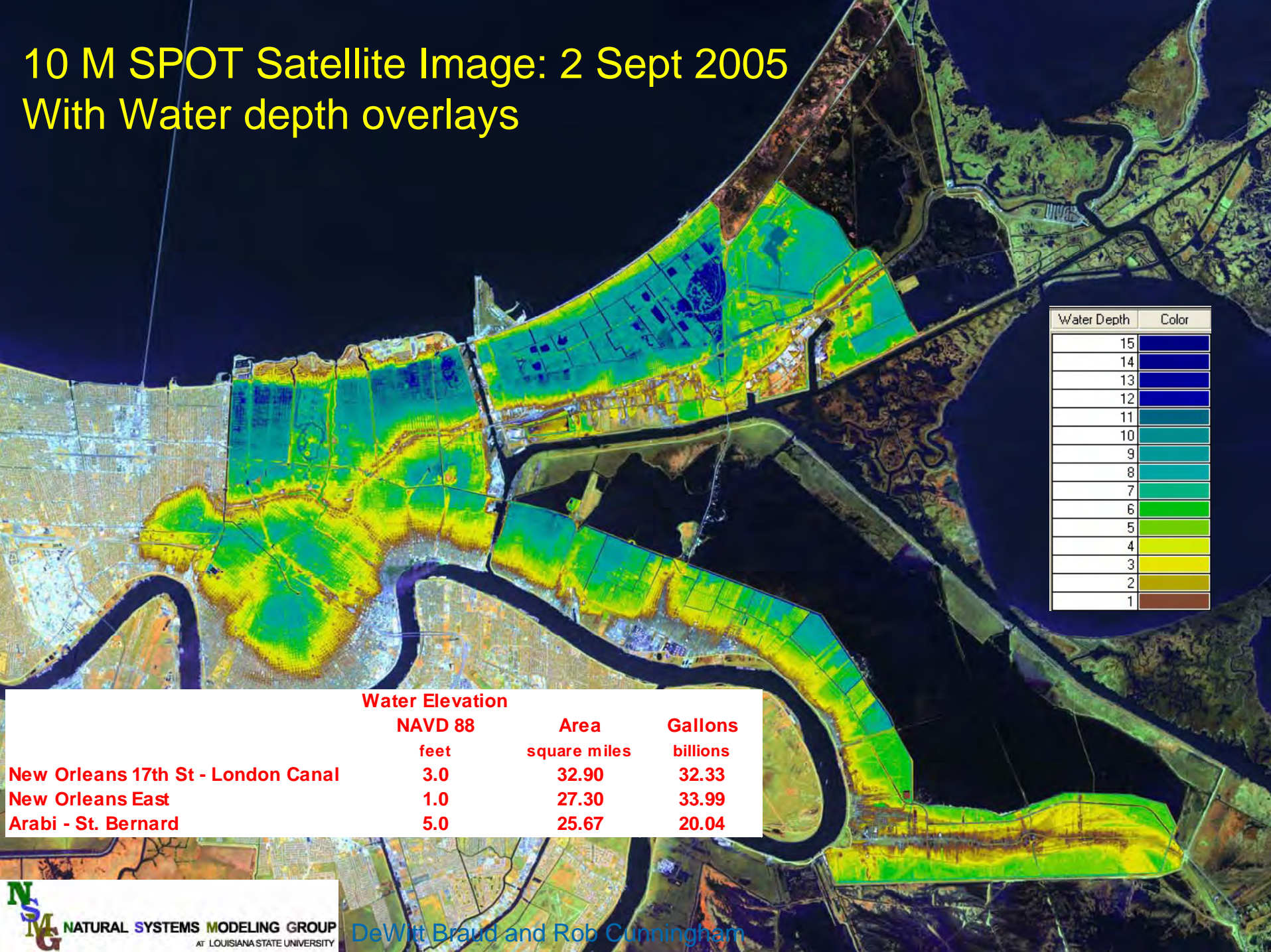
Louisiana Sea Grant and Louisiana Recovery Authority

10 M SPOT Satellite Image: 2 Sept 2005

Support of Emergency Operations
Louisiana Office of Emergency Preparedness
And Homeland Security

10 M SPOT Satellite Image: 2 Sept 2005

With Water depth overlays



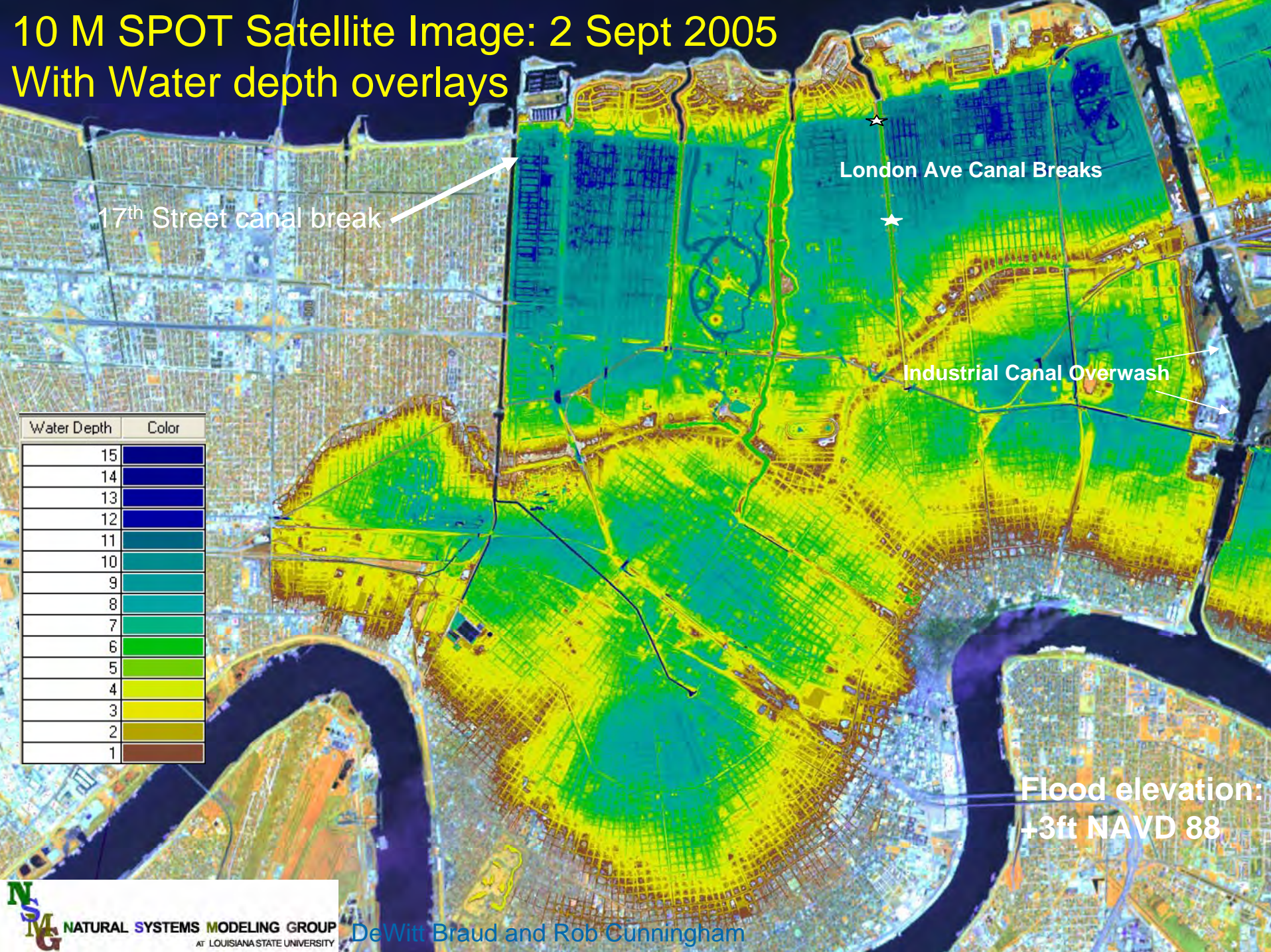
Water Depth	Color
15	Dark Blue
14	Blue
13	Blue
12	Blue
11	Teal
10	Teal
9	Teal
8	Teal
7	Green
6	Green
5	Light Green
4	Yellow-Green
3	Yellow
2	Light Brown
1	Brown

Water Elevation

	NAVD 88	Area	Gallons
	feet	square miles	billions
New Orleans 17th St - London Canal	3.0	32.90	32.33
New Orleans East	1.0	27.30	33.99
Arabi - St. Bernard	5.0	25.67	20.04

10 M SPOT Satellite Image: 2 Sept 2005

With Water depth overlays



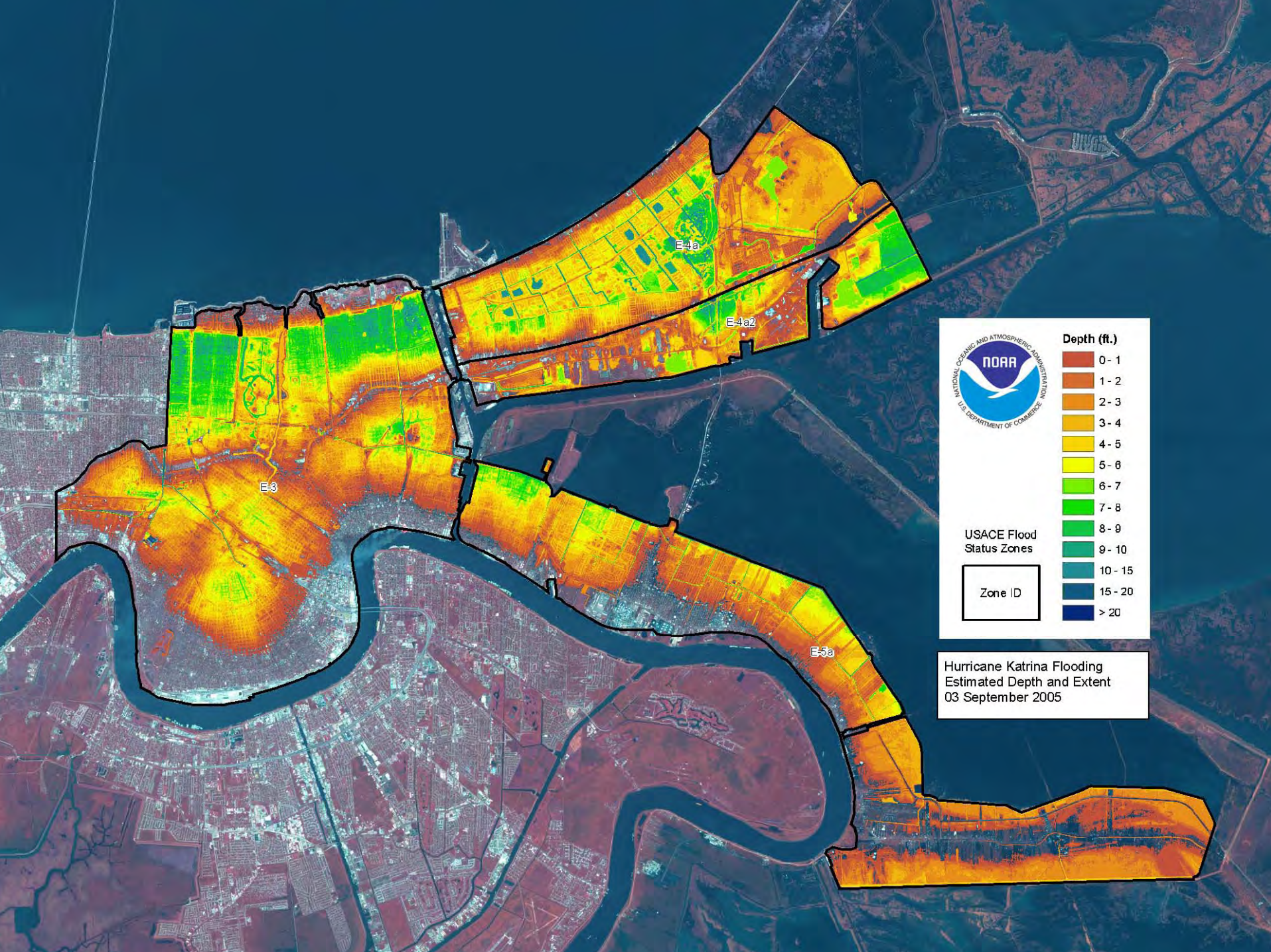
17th Street canal break


London Ave Canal Breaks

Industrial Canal Overwash

Water Depth	Color
15	Dark Blue
14	Blue
13	Dark Teal
12	Teal
11	Greenish Teal
10	Green
9	Light Green
8	Yellow-Green
7	Yellow
6	Light Yellow
5	Yellow
4	Light Yellow
3	Yellow
2	Light Yellow
1	Brown

Flood elevation:
+3ft NAVD 88



 NATIONAL OCEANIC AND ATMOSPHERIC ADMINISTRATION
U.S. DEPARTMENT OF COMMERCE

Depth (ft.)

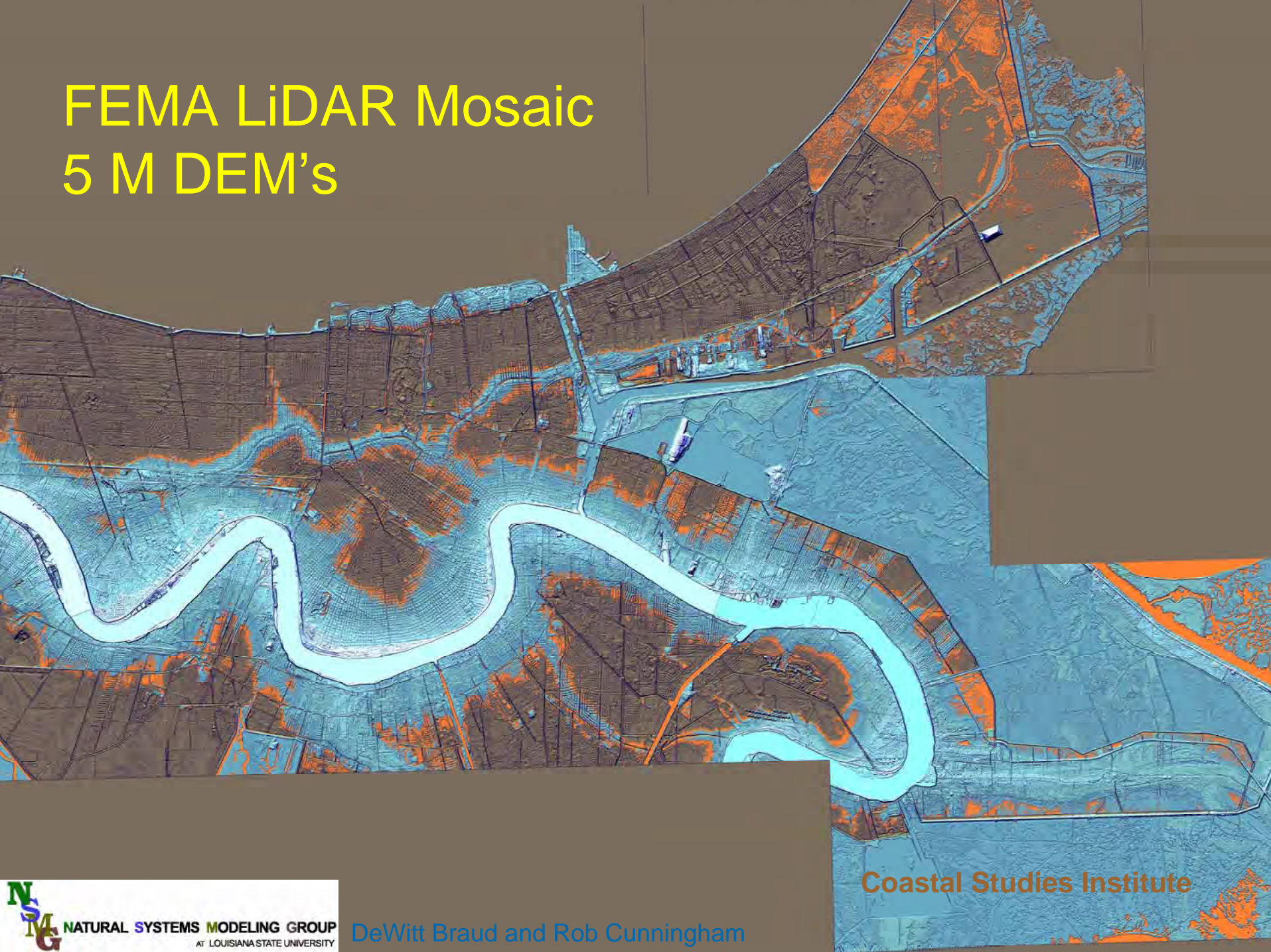
- 0 - 1
- 1 - 2
- 2 - 3
- 3 - 4
- 4 - 5
- 5 - 6
- 6 - 7
- 7 - 8
- 8 - 9
- 9 - 10
- 10 - 15
- 15 - 20
- > 20

USACE Flood Status Zones

Zone ID

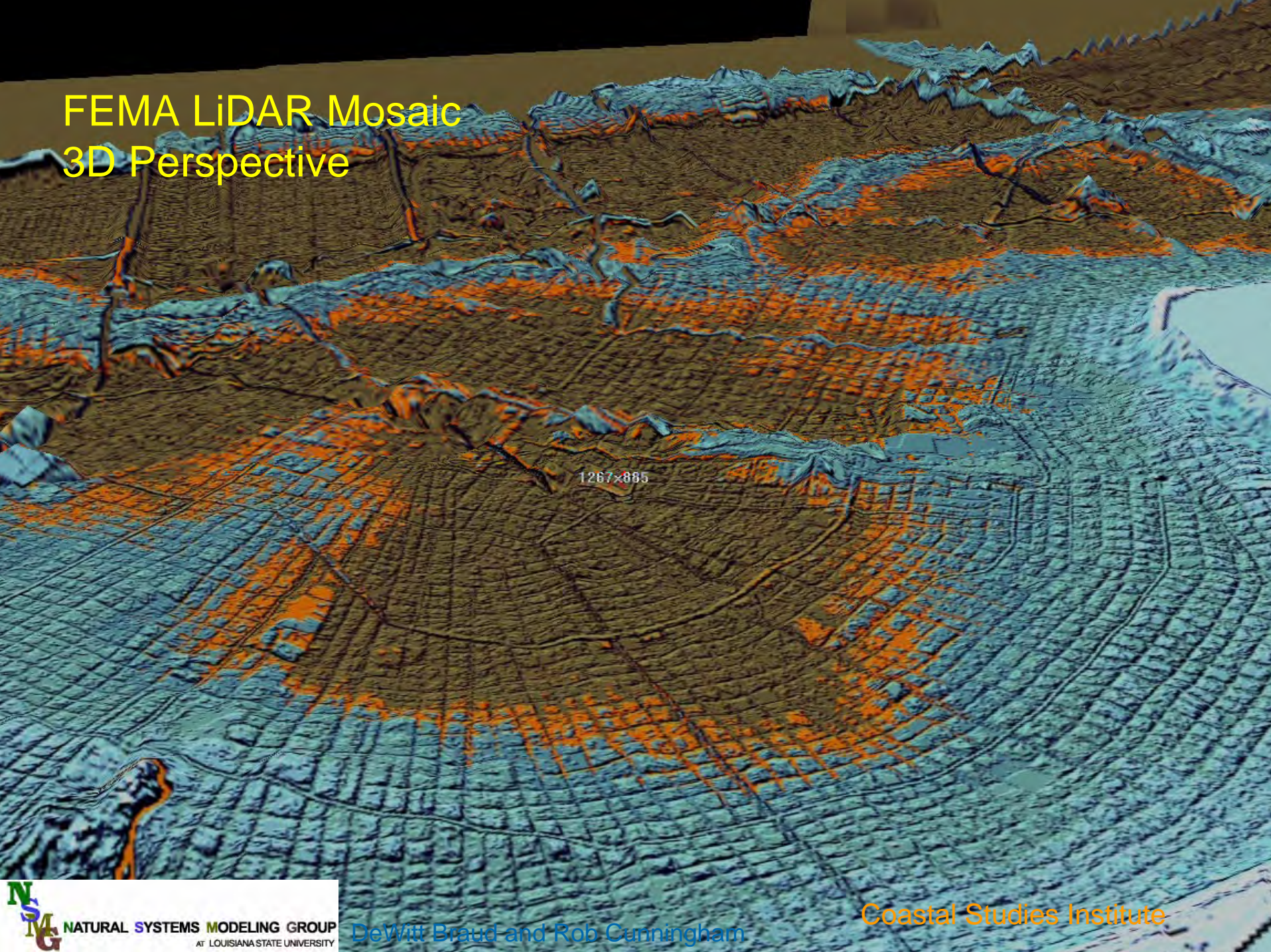
Hurricane Katrina Flooding
Estimated Depth and Extent
03 September 2005

FEMA LiDAR Mosaic 5 M DEM's



Coastal Studies Institute

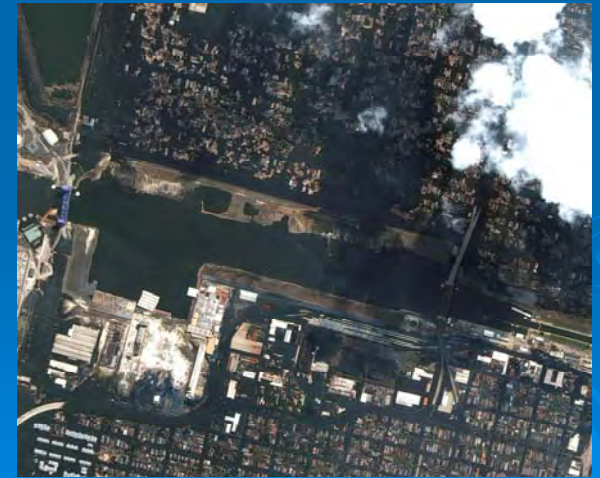
FEMA LiDAR Mosaic 3D Perspective



1267x885

High Resolution Images

- Aircraft Photos
 - 3001 Inc.
- Satellite Images:
 - SPOT
 - Image America
 - Space Imaging: Ikonos
 - Digital Globe – Quickbird
 - Radarsat



Holly Beach, LA

Cameron Parish



By Arthur Belala / courtesy USACE

DOQQ 1998

Holly Beach, LA



ADS40 2005


Add Links To Other Data Sets

Office of Coast Survey - NOAA Raster Navigational Charts - Microsoft Internet Explorer

File Edit View Favorites Tools Help

Address <http://nauticalcharts.noaa.gov/mcd/Raster/index.htm>

Google Search 128 blocked Check AutoLink AutoFill Options



Index - Select One: ▾

- About Us
- What's New?
- Nautical Charts and Related Publications
- Critical Corrections
- Wrecks and Obstructions
- Navigation Services
- Hydrographic Surveys
- GIS Products & Services
- Historic Maps and Charts
- Research and Development
- Sales Information
- Library
- FAQs
- Contact Us

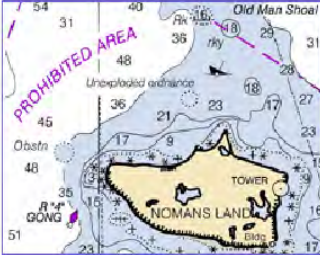
Office of Coast Survey

NOAA Raster Navigational Charts

[NOAA RNC™ Overview](#) [Be An Official RNC Distributor](#) [Download NOAA RNCs™](#) [Resources](#)

Overview

In the United States, all official nautical paper charts produced by NOAA's Office of Coast Survey (OCS) are available in raster format. A fundamental tool of marine navigation, NOAA's Raster Navigational Charts (NOAA RNCs™) are produced by scanning at high resolution the original color separates, which are used to print the paper charts. NOAA adds to the digital raster file such features as data describing the chart, its datum, projection, and its geo-reference. Geo-referencing enables a computer-based navigation system that is connected to a GPS to locate and display on the chart image on screen the vessel's exact position.



NOAA Raster Navigational Chart

[Click here to download NOAA RNCs™](#)

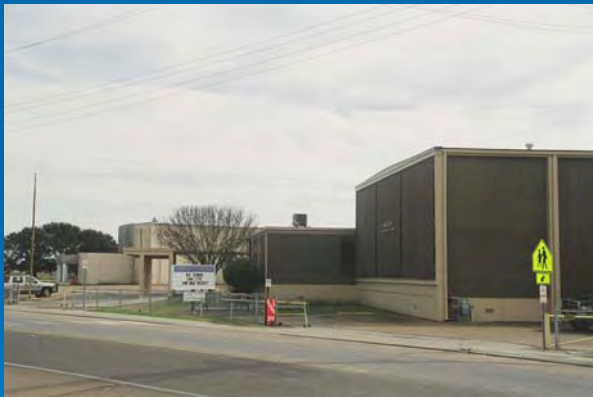
Done Internet

LIDAR and Long Term Recovery: Cameron Parish and Primary Roads



Long Term Commitment

- Preserve access to hurricane Katrina and Rita data for research and long term recovery.
- Add additional data to the clearinghouse
- Assist in hazard mitigation and recovery



March 2005



October 2005

Cameron Parish High School