

# Office of Coast Survey

Rear Admiral Benjamin Evans, Director

September 24, 2024



HYDROGRAPHIC SERVICES REVIEW PANEL

# Coast Survey Updates



**CAPT John "Jay"  
Lomnicky**

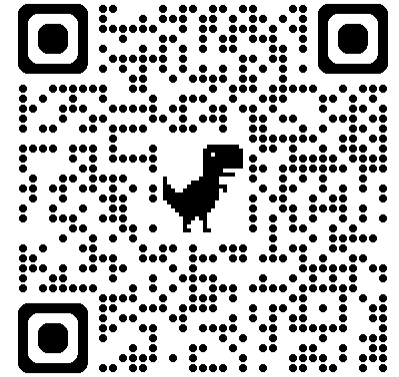


**Darren Wright**



**Laura Pagano**

**OPEN OPPORTUNITY:**



**Great Lakes Navigation  
Manager**

**Apply TODAY!**



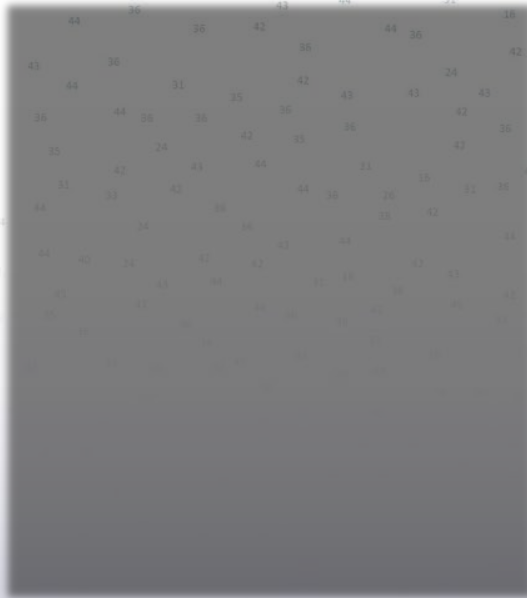
**HYDROGRAPHIC SERVICES REVIEW PANEL**



# Coast Survey Updates



Corey Allen



Amanda Phelps

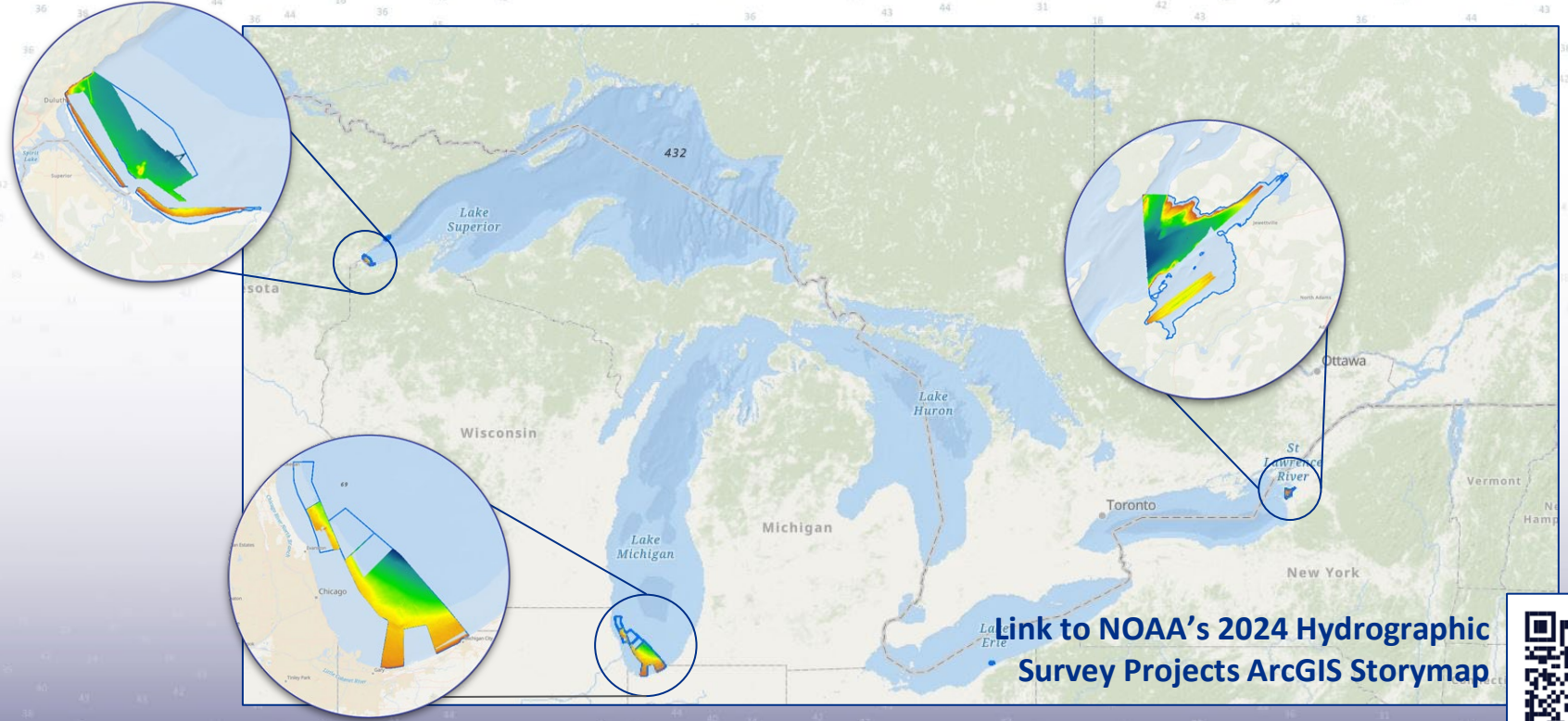


Meredith Westington



HYDROGRAPHIC SERVICES REVIEW PANEL

# Goal 1—Expand acquisition of data

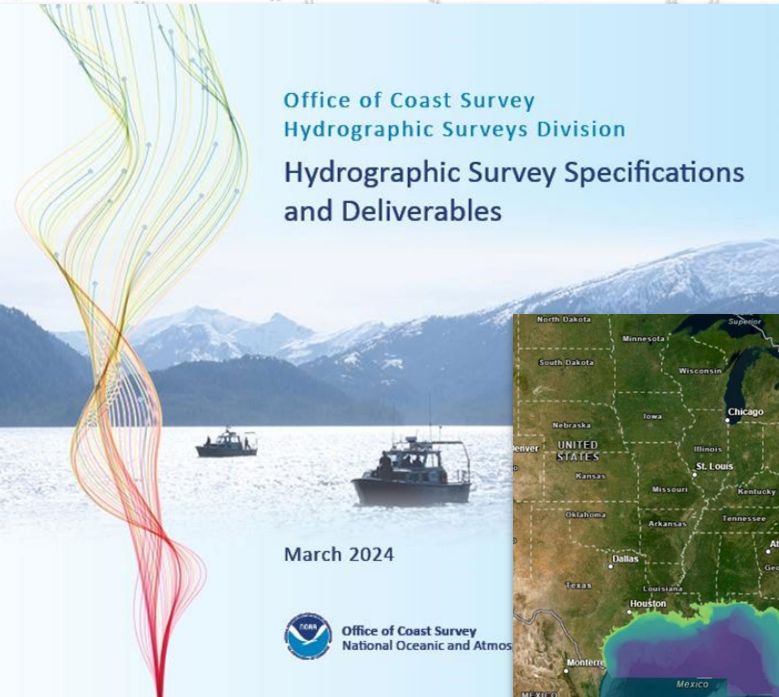


[Link to NOAA's 2024 Hydrographic Survey Projects ArcGIS Storymap](#)






# Goal 2—Deliver Products and Services



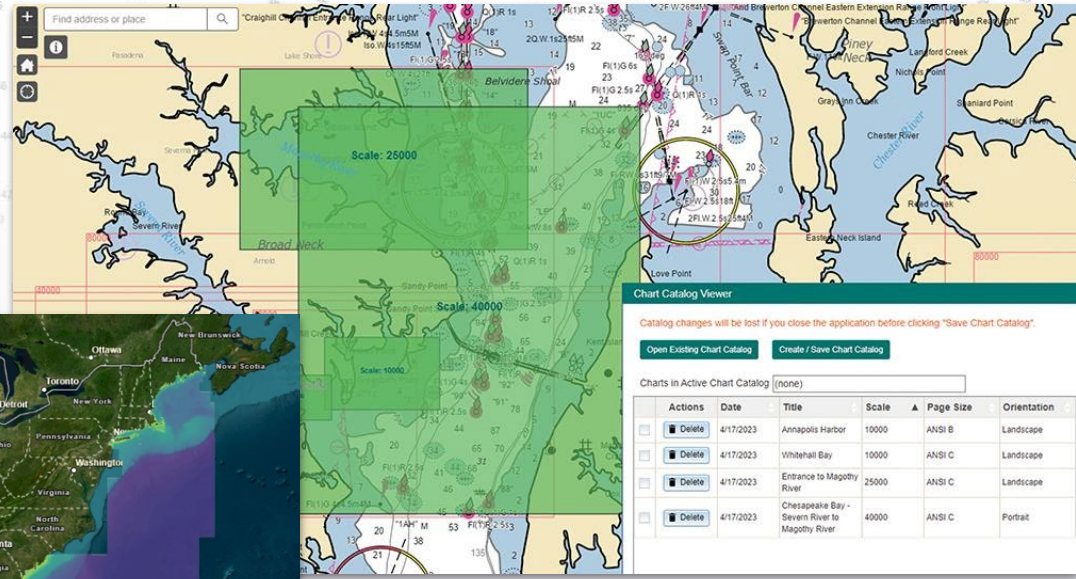
Office of Coast Survey  
Hydrographic Surveys Division

Hydrographic Survey Specifications  
and Deliverables

March 2024



Office of Coast Survey  
National Oceanic and Atmos



Find address or place

Scale: 25000

Scale: 40000

Scale: 10000

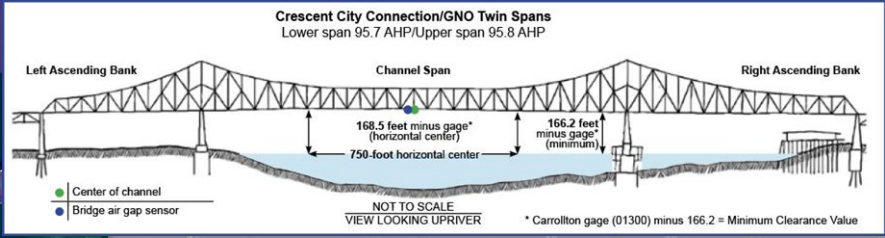
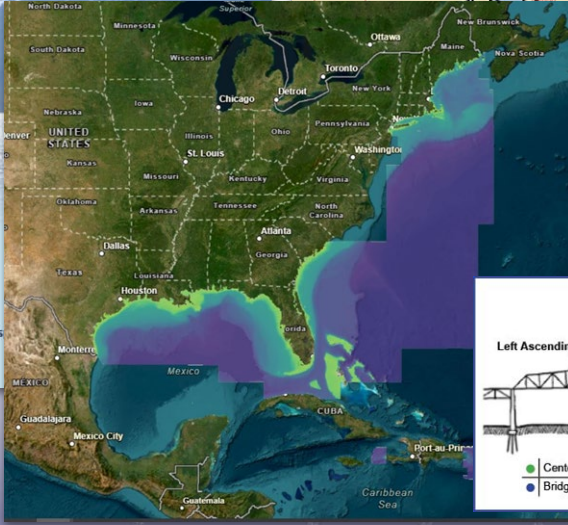
Chart Catalog Viewer

Catalog changes will be lost if you close the application before clicking "Save Chart Catalog".

Open Existing Chart Catalog Create / Save Chart Catalog

Charts in Active Chart Catalog (none)

Actions	Date	Title	Scale	Page Size	Orientation
<input type="checkbox"/> Delete	4/17/2023	Annapolis Harbor	10000	ANSI B	Landscape
<input type="checkbox"/> Delete	4/17/2023	Whitehall Bay	10000	ANSI C	Landscape
<input type="checkbox"/> Delete	4/17/2023	Entrance to Magogly River	25000	ANSI C	Landscape
<input type="checkbox"/> Delete	4/17/2023	Chesapeake Bay - Severn River to Magogly River	40000	ANSI C	Portrait



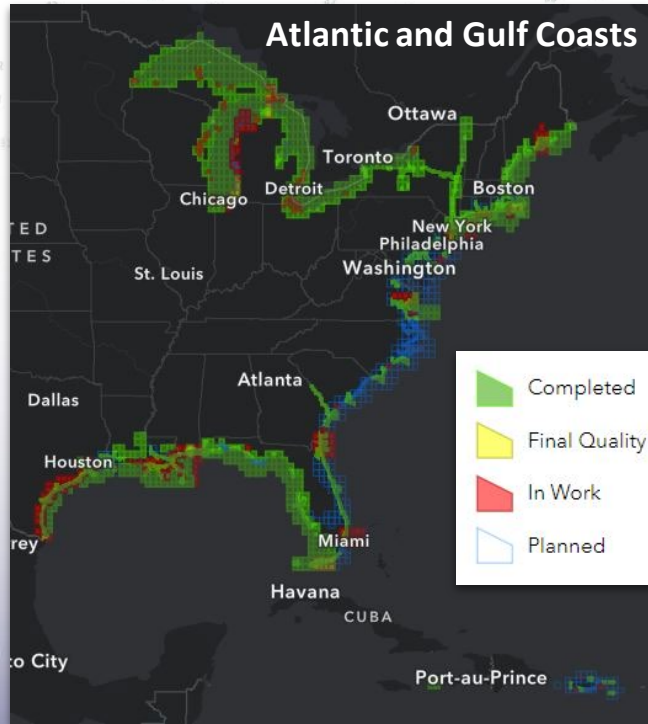
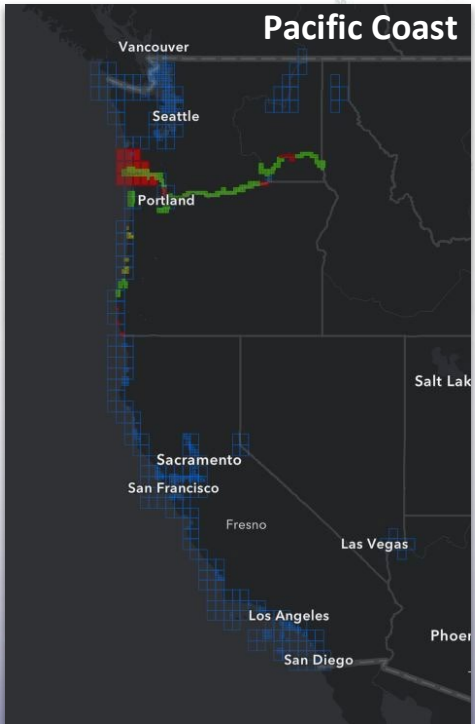
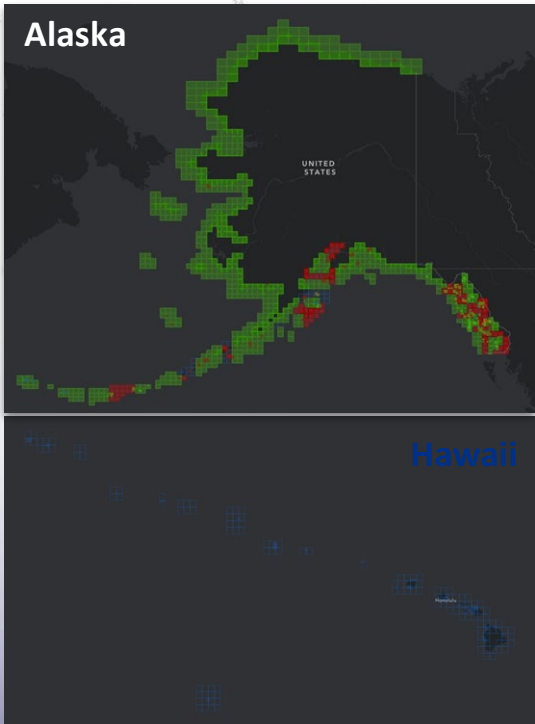


# Goal 3—Enhance and sustain workforce



HYDROGRAPHIC SERVICES REVIEW PANEL

# Goal 4—Evolve systems and processes to accelerate product development and delivery



- Completed
- Final Quality Check
- In Work
- Planned





# Coast Survey Updates

## International Engagement



HYDROGRAPHIC SERVICES REVIEW PANEL





**Thank You!**



**HYDROGRAPHIC SERVICES REVIEW PANEL**