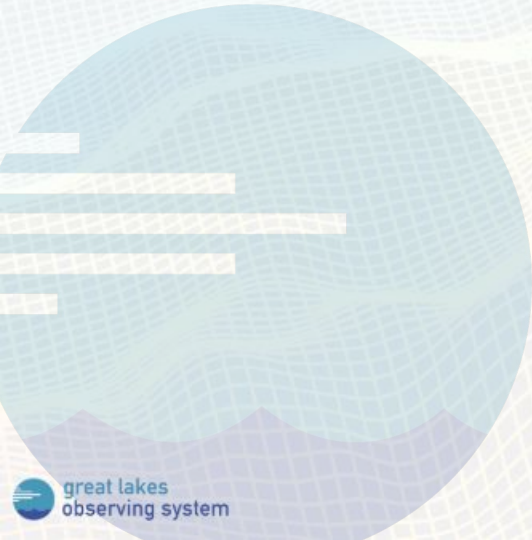


Underserved Communities Mapping and Charting Needs in the Great Lakes Region

Jennifer Boehme
Chief Executive Officer
Great Lakes Observing System
9/24/24



About GLOS

- Freshwater RA
- 501c3, non-profit in U.S.
- Bi-national board of directors, representing policy, technology, academic, natural resource management, and maritime industry stakeholders.

End-to-end data services:

Observing assets, data management, information delivery and related outreach/research/modeling

www.glos.org



ENGAGE

Notify

Report

Share

OBSERVE

Deploy

Measure

Transmit

CONNECT

Check

Integrate

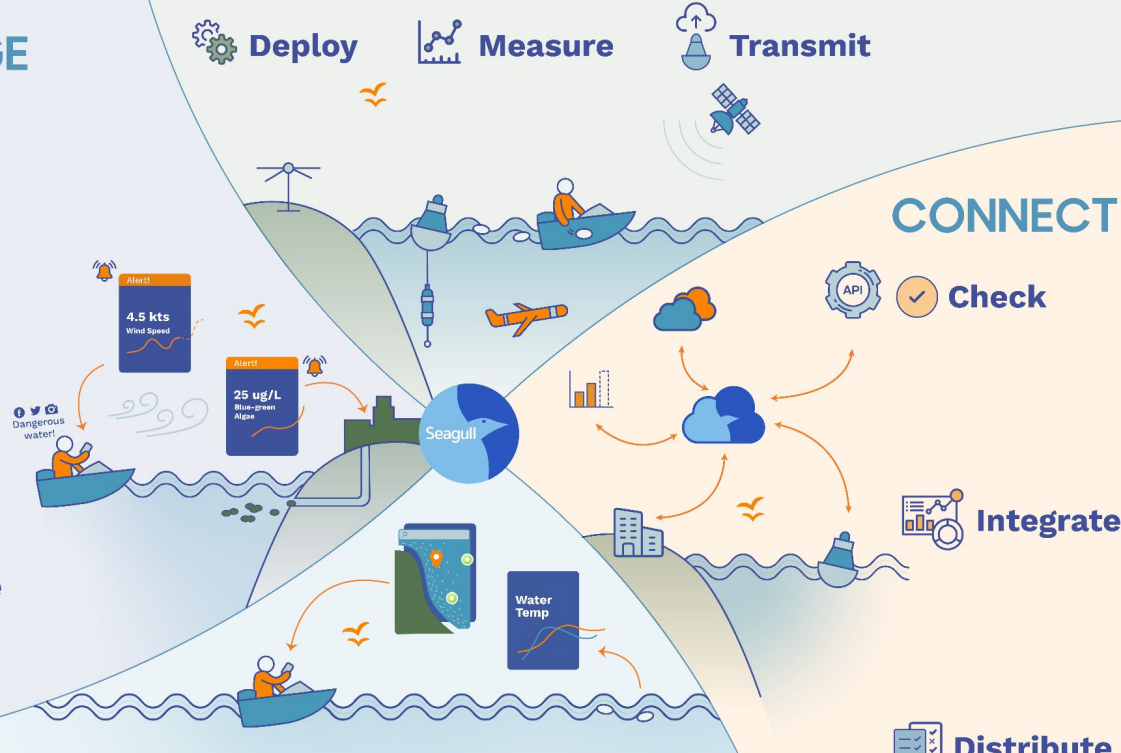
Distribute

DISCOVER

Visualize

Analyze

Configure



200+
Observing
Platforms

ENGAGE

Notify

Report

Share

OBSERVE



Deploy



Measure



Transmit

CONNECT



Check

Integrate

Distribute

DISCOVER



Visualize



Analyze



Configure



seagull.glos.org

Great Lakes Data and Information Discovery Platform

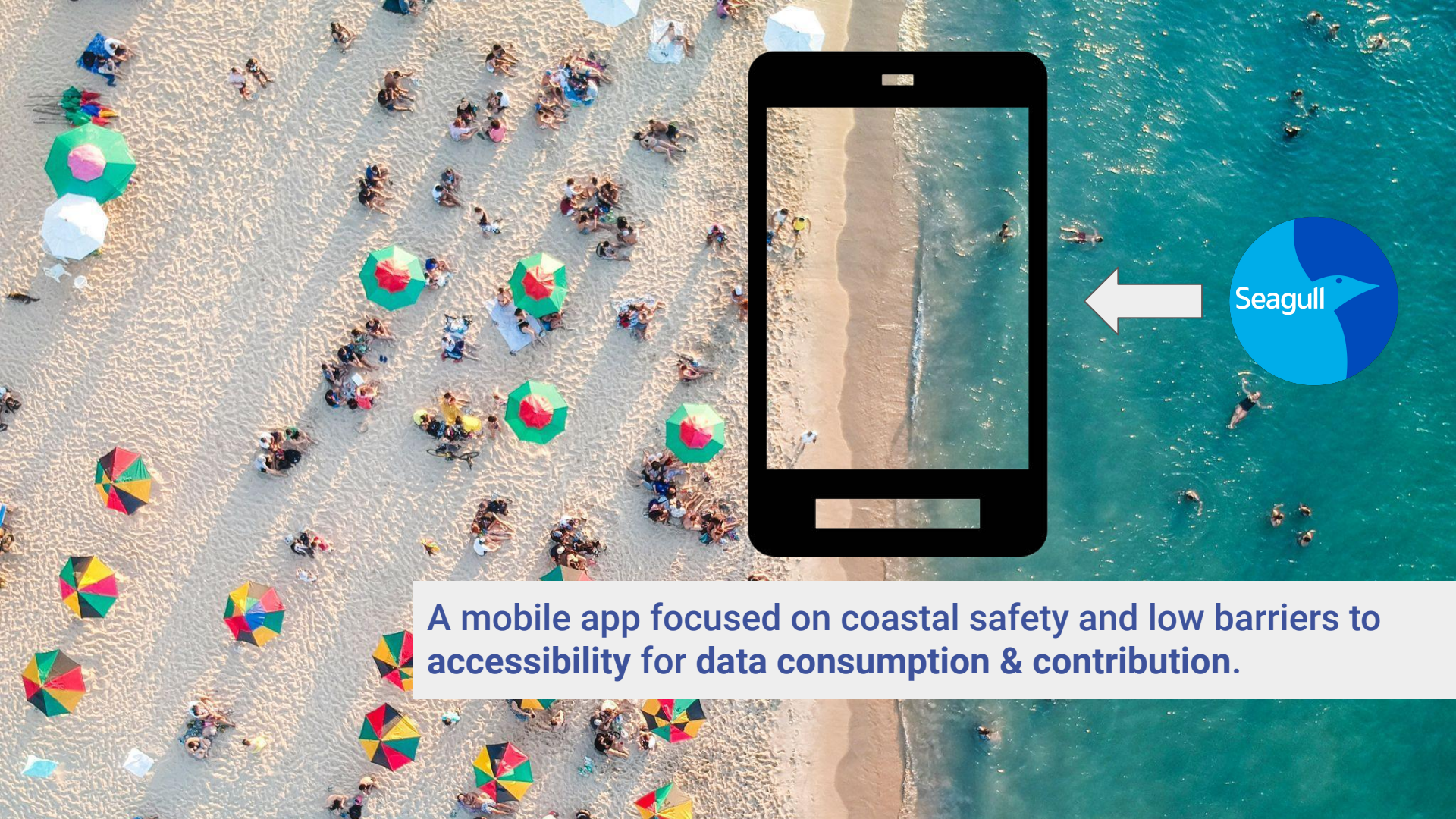




Serving
**Underserved and Underinvested
Communities**
requires
Engagement and Listening

GLOS is well positioned to learn from these communities.

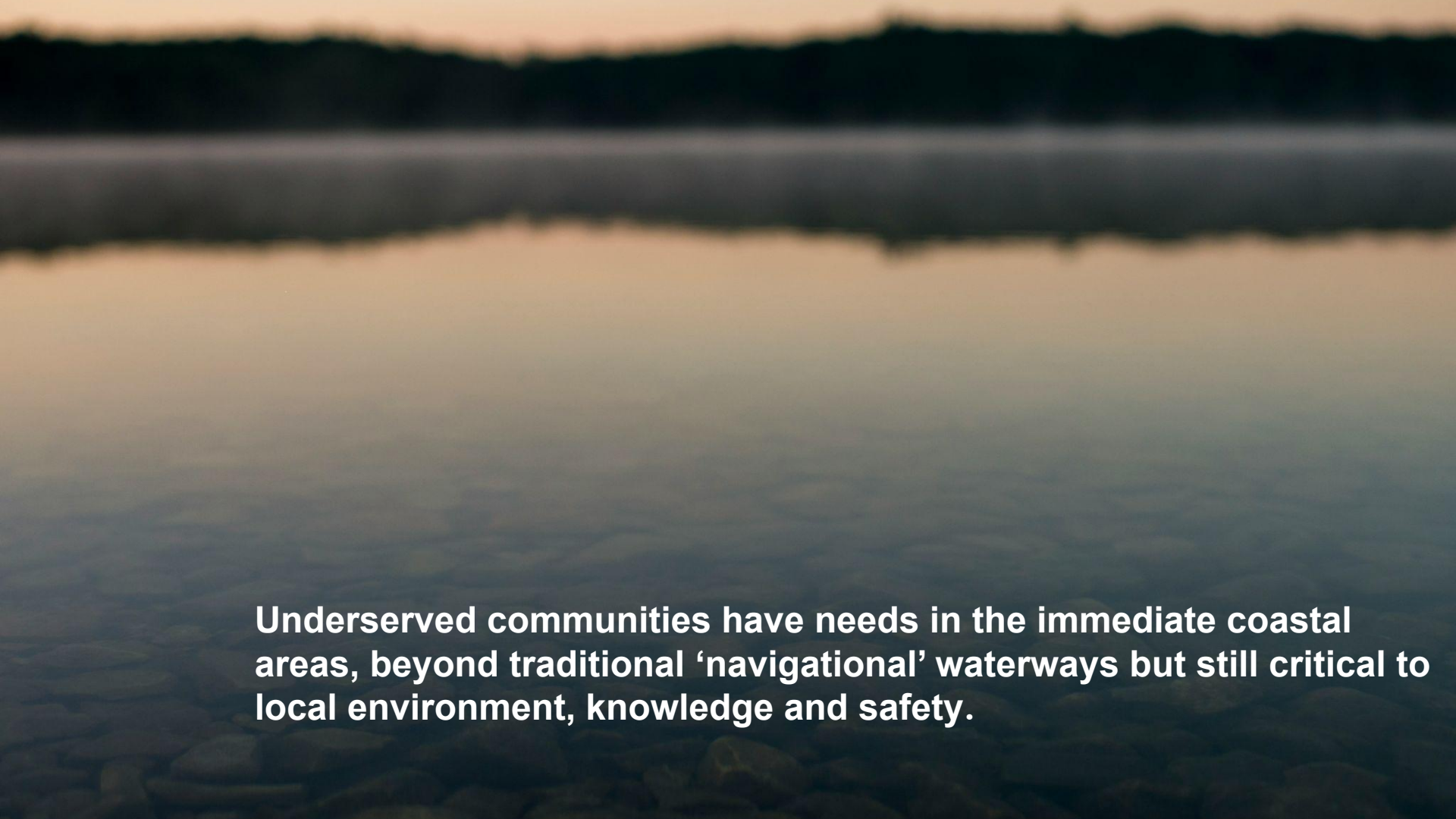




A mobile app focused on coastal safety and low barriers to accessibility for data consumption & contribution.



Challenges to reaching underserved communities include a lack of resources for engagement, and community capacity to participate



Underserved communities have needs in the immediate coastal areas, beyond traditional 'navigational' waterways but still critical to local environment, knowledge and safety.

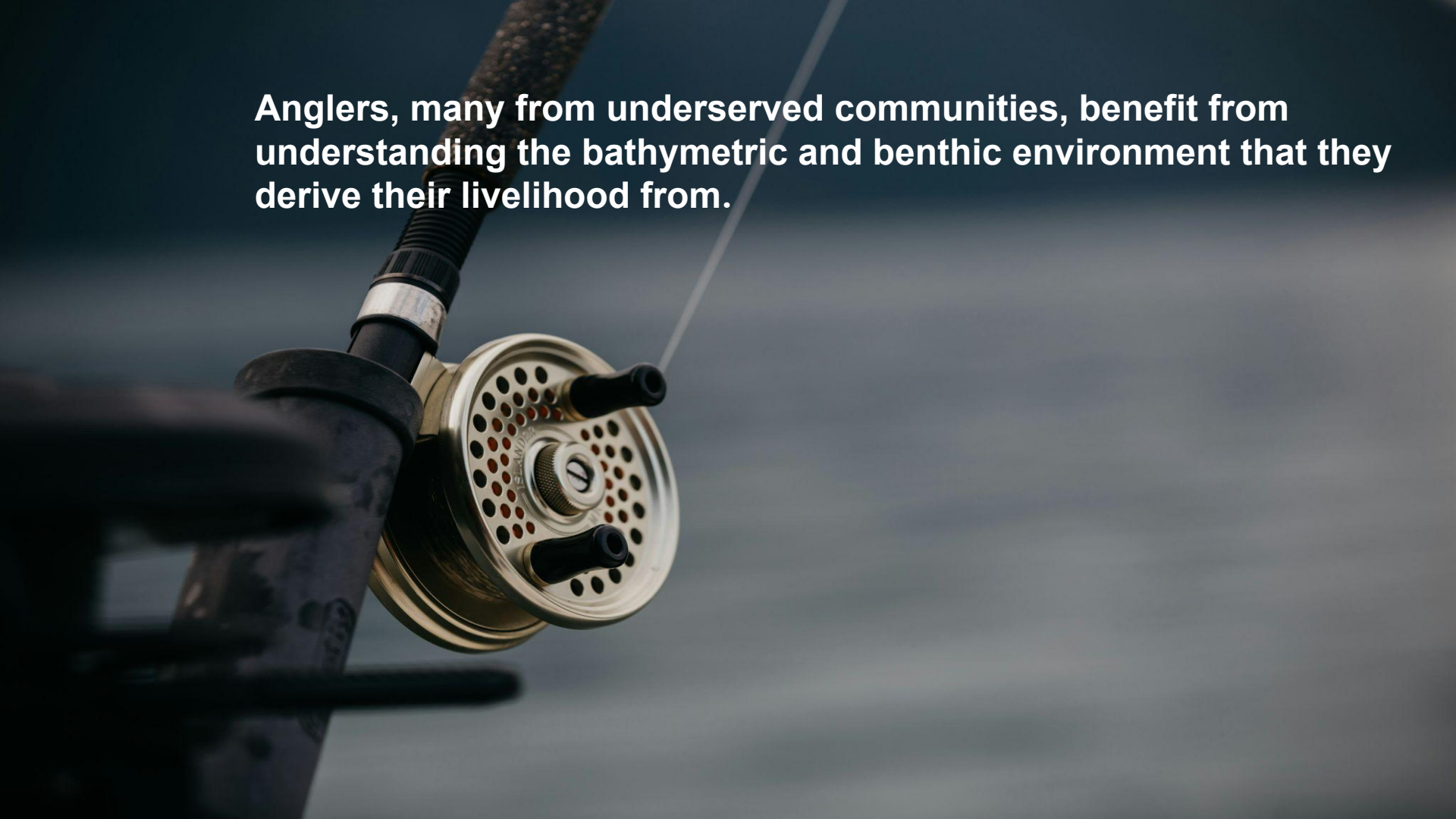
Understanding the impacts of climate change and storm events.





Flood modeling can help with offsetting increasing insurance costs.

Anglers, many from underserved communities, benefit from understanding the bathymetric and benthic environment that they derive their livelihood from.



Some of the many benefits of NOAA Services serving underserved communities



Safety of
Navigation



High Rez
Surfaces



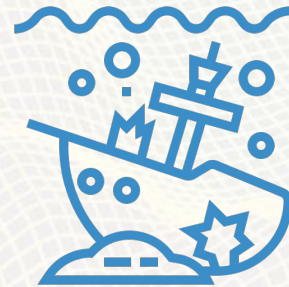
Coastal
Infrastructure



Benthic
Habitat



Navigation
Aids



Wrecks

Shallower

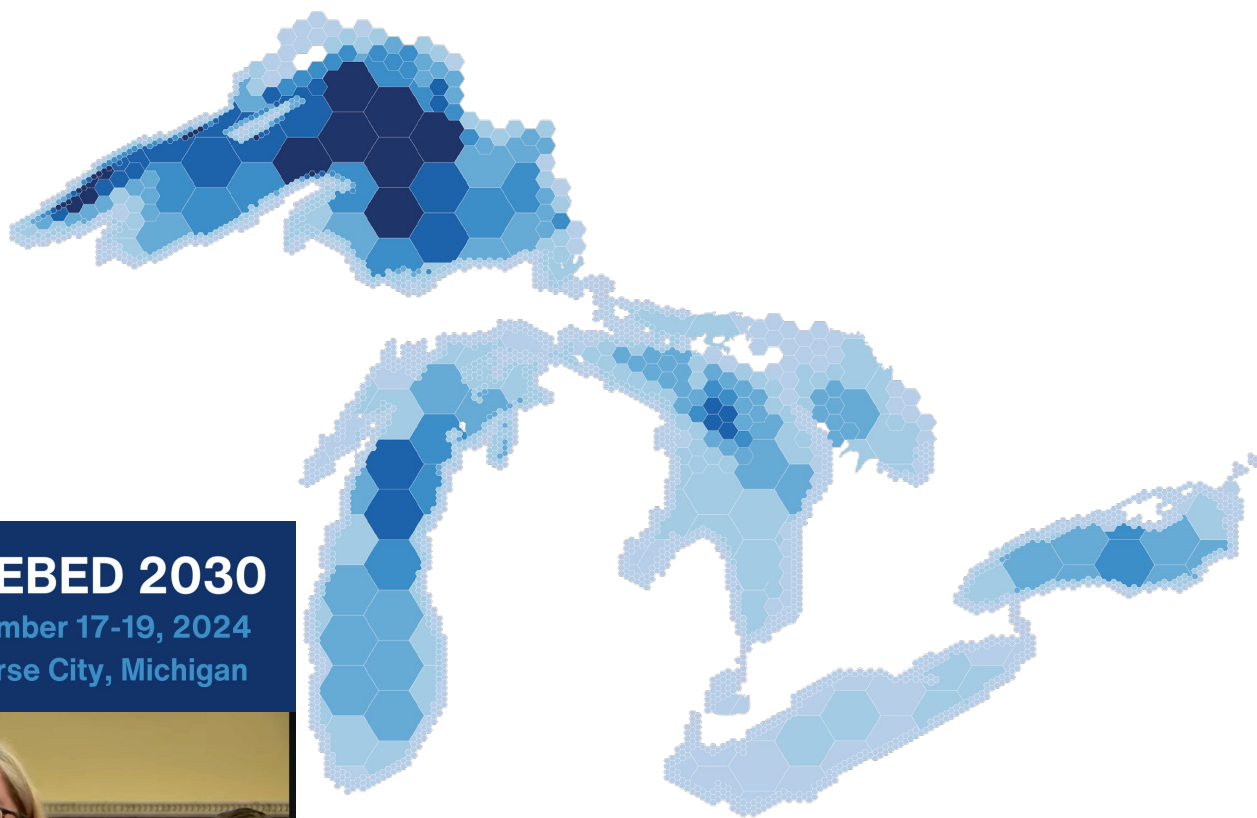
0 to -40m



Deeper

-200m +

15%



Depth

Lake Erie

64 m

Lake Huron

229 m

Lake Ontario

244 m

Lake Michigan

282 m

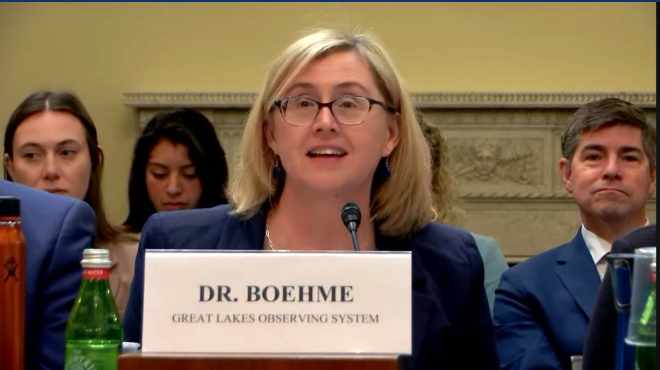
Lake Superior

406 m

 **BUILDING THE GREAT MAP**
Lakebed 2030

LAKEBED 2030

September 17-19, 2024
Traverse City, Michigan



THE GREAT LAKES
Density Map by Hex
Size and Color

Thank you!

Building the Great Map

Jennifer Boehme - jennifer@glos.org