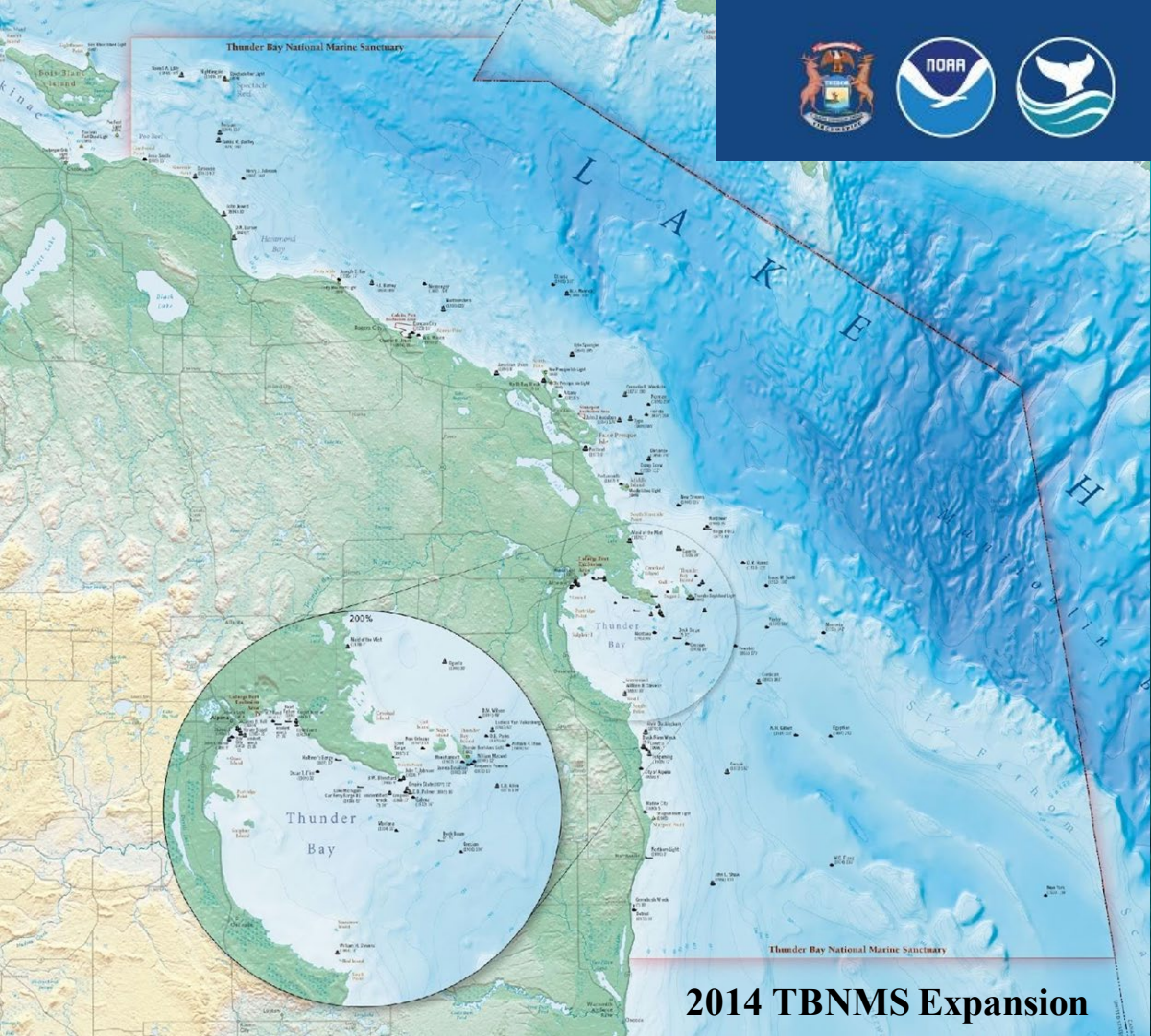




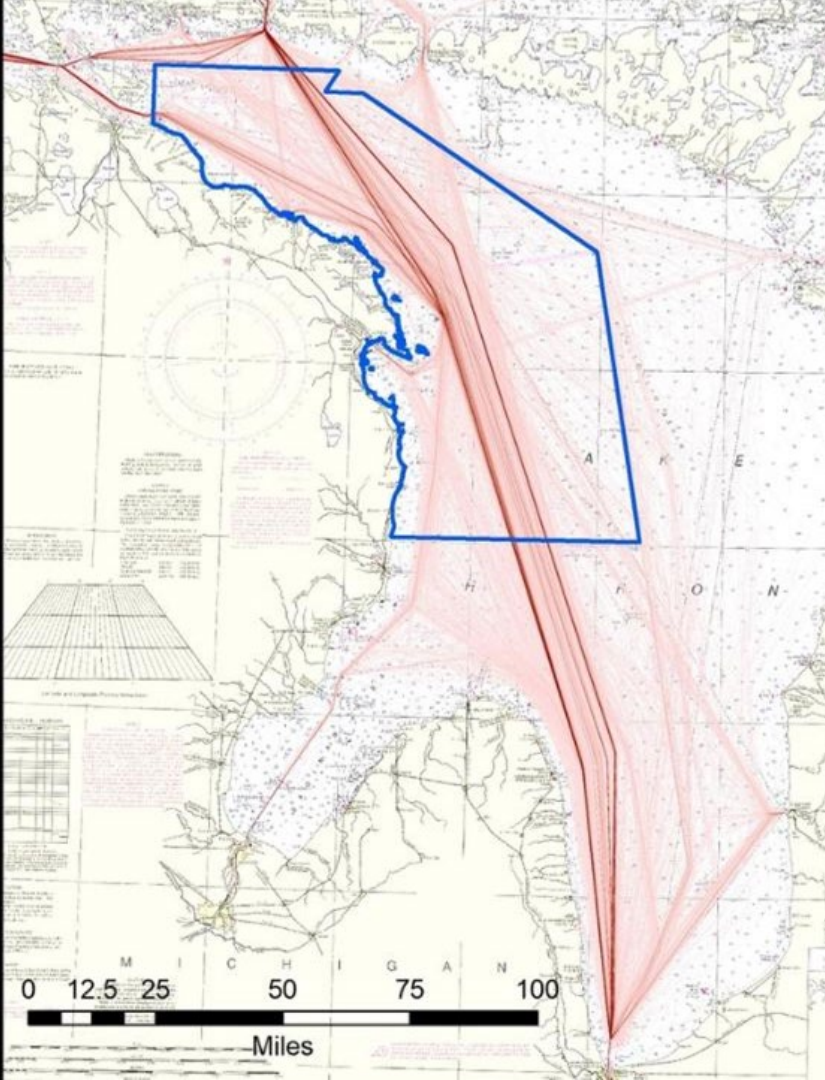
*Protecting the
Great Lakes and
their Rich
History*

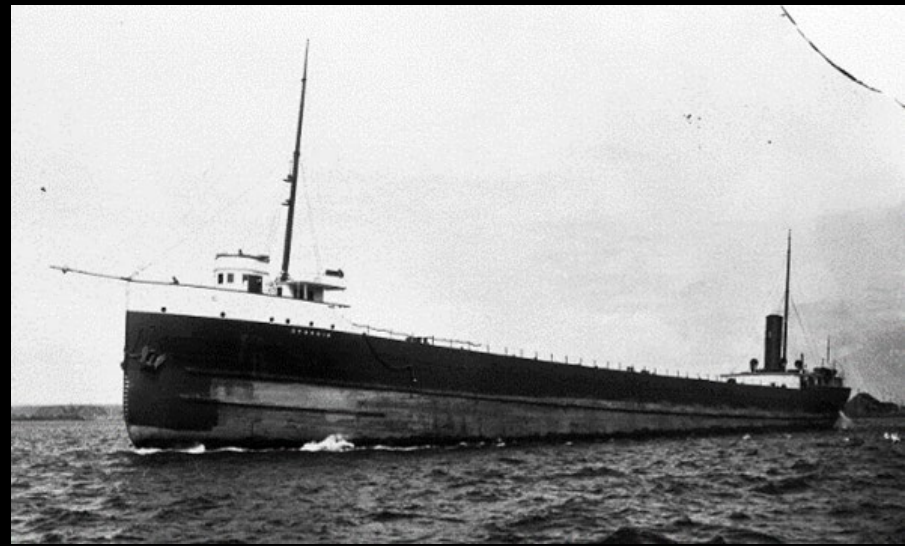
**Stephanie Gandulla,
Resource Protection
Coordinator & Maritime
Archaeologist**



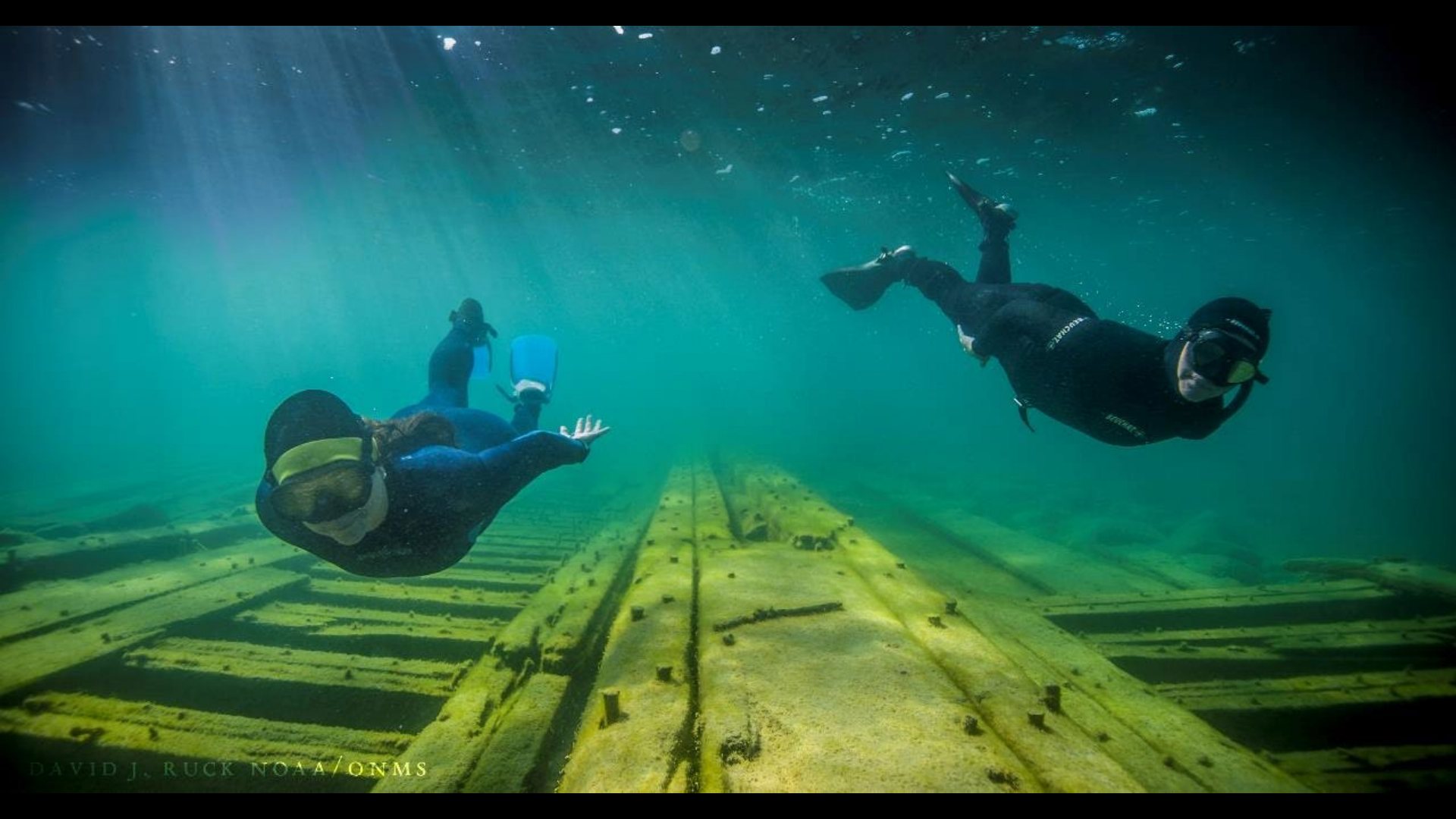
2014 TBNMS Expansion







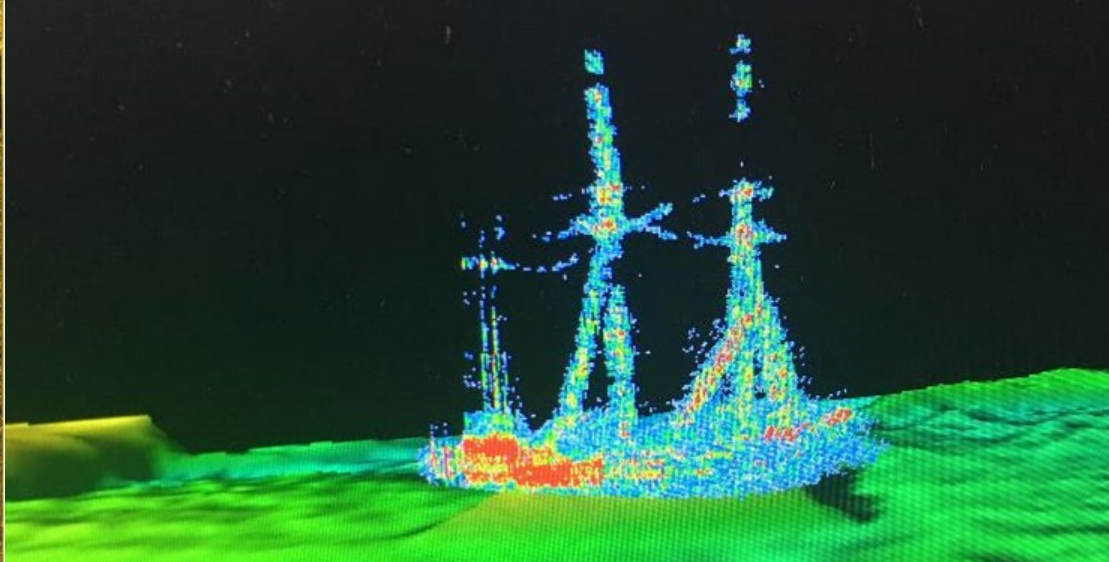
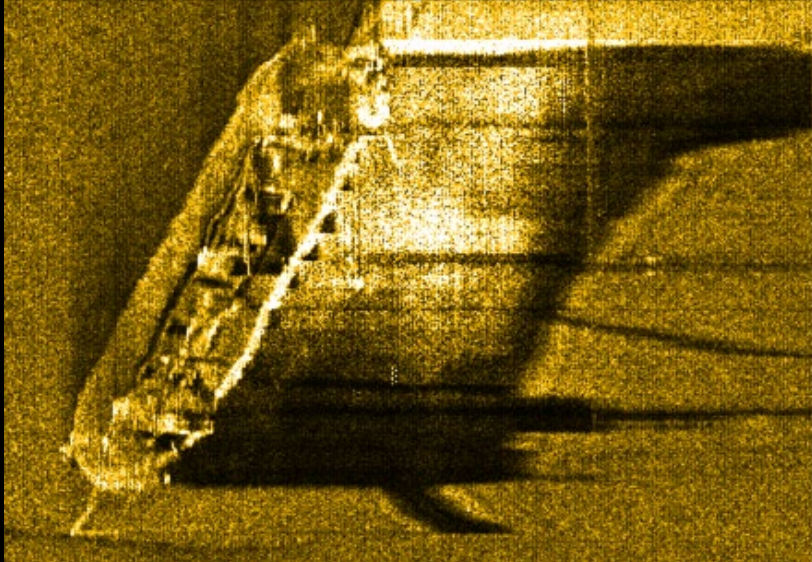




DAVID J. RUCK NOAA/ONMS







Thunder Bay National Marine Sanctuary Prioritization Digital Atlas map



Private Member ⓘ

NOAA GeoPlatform

Summary

This map shows the distribution of important cultural and natural resources, administrative boundaries, and lakebed survey areas in the Thunder Bay National Marine Sanctuary.

[View Full Details](#)

Details



Map

Web Map



May 26, 2021

Date Updated



February 26, 2020

Published Date



Public

Anyone can see this content



Custom License

[View license details](#)





GREAT LAKES
MARITIME
HERITAGE
CENTER

EXPLORING THE
*Shipwreck
Century*

An inventory of shipwrecks located in the Great Lakes and the St. Lawrence River. This book is a treasure trove of information for anyone interested in the history of the Great Lakes and the St. Lawrence River. It includes a list of shipwrecks, their locations, and the stories behind them. The book is available for purchase at the museum.

THUNDER BAY
NATIONAL
MARINE
SANCTUARY













**We value what impacts our lives, and strong personal connections
create a greater public will for action.
People protect what they value.
People protect what they love.**