

# Coast Guard Sector Los Angeles – Long Beach



NOAA Hydrographic Services Review Panel

05 March 2024



# Sector Los Angeles-Long Beach

## Broad Range

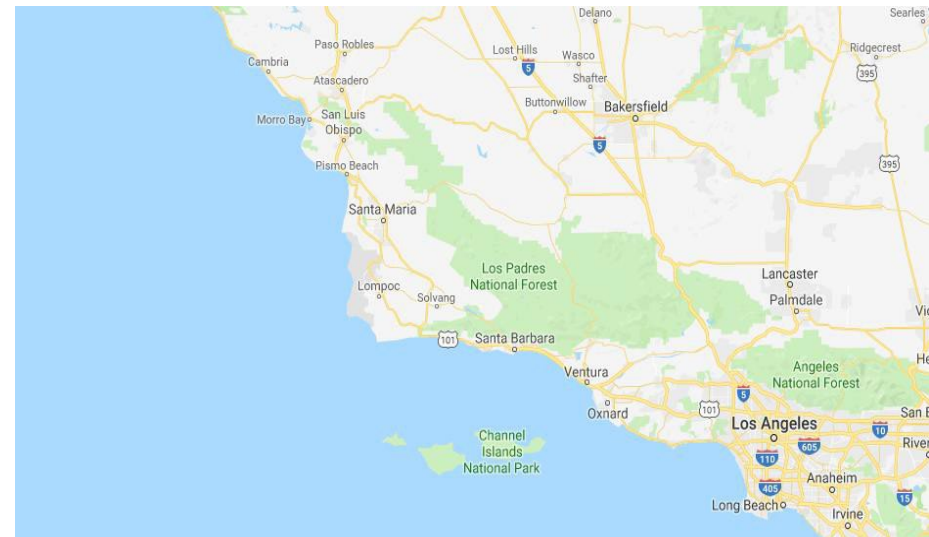
- Area of Responsibility covers ~350 miles of coastline
- San Luis Obispo to Orange County, out 200nm

## Broad Authority

- Sector Commander wears five “hats”
- COTP, FMSC, FOSC, OCMI, SMC

## Broad Focus

- Operate; Regulate; Coordinate
- 10 of 11 USCG Mission Areas



# Ports of Los Angeles & Long Beach

## Port of LA

- ❑ #1 Container port in North America, 17<sup>th</sup> busiest in the world
- ❑ 8.6 million TEU in 2023
- ❑ Cargo Value of \$432 billion in 2023
- ❑ 16% of nation's market share

## Port of LB

- ❑ No. 1 export seaport in US
- ❑ 8-9 million TEU annually
- ❑ Cargo Value of \$200 billion

## Combined

- ❑ 9<sup>th</sup> busiest by container volume in world
- ❑ 31% of all containerized waterborne international trade for the US.



<https://www.portoflosangeles.org/>  
<http://www.polb.com/>



Homeland  
Security



# Unique & Novel Waterway Usage

## Major Events

- ❑ Sail Grand Prix
- ❑ Fleet Week
- ❑ Pacific Airshow
- ❑ 2028 Olympics



## New Technology

- ❑ Commercial Space Flight
- ❑ Mariculture
- ❑ Automation



## National Focus

# Maritime Safety & Security Partnerships

- Federal
- State
- Local
- Private Industry & Labor
- Elected officials
- Community groups



U.S. DEPARTMENT OF  
Homeland Security



# NOAA Partnership & Services

## Navigational Charts

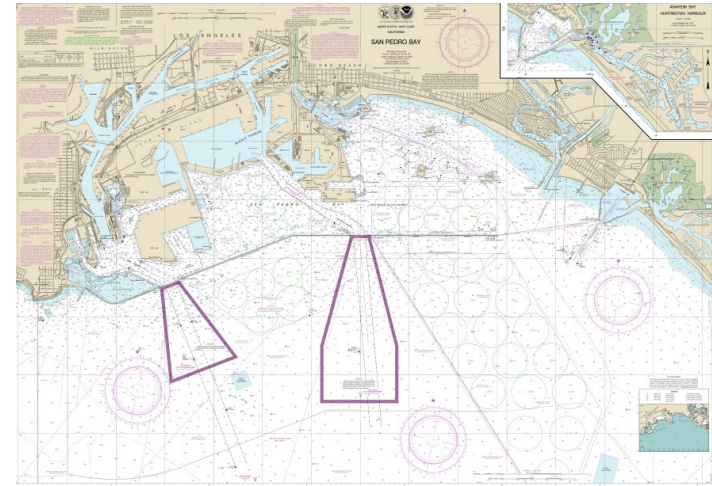
- ❑ Search & Rescue Missions
- ❑ Marine Event Planning
- ❑ Emergency Preparedness
- ❑ Daily Afloat Operations

## Operational Forecasts

- ❑ Increasing weather events in SoCal require add'l attention and preparedness
- ❑ Forecasts & weather briefs vital to prep activities

## Remote Sensing

- ❑ Multiple ongoing anchorage projects will require NOAA buy-in/input



# Coast Guard Sector Los Angeles – Long Beach



NOAA Hydrographic Services Review Panel

05 March 2024

