



NOAA's Role Supporting Port of Long Beach UnderKeel Clearance Project

Jeffrey Ferguson
Navigation Manager
March 2024



Office of Coast Survey

National Oceanic and Atmospheric Administration

Under Keel Clearance

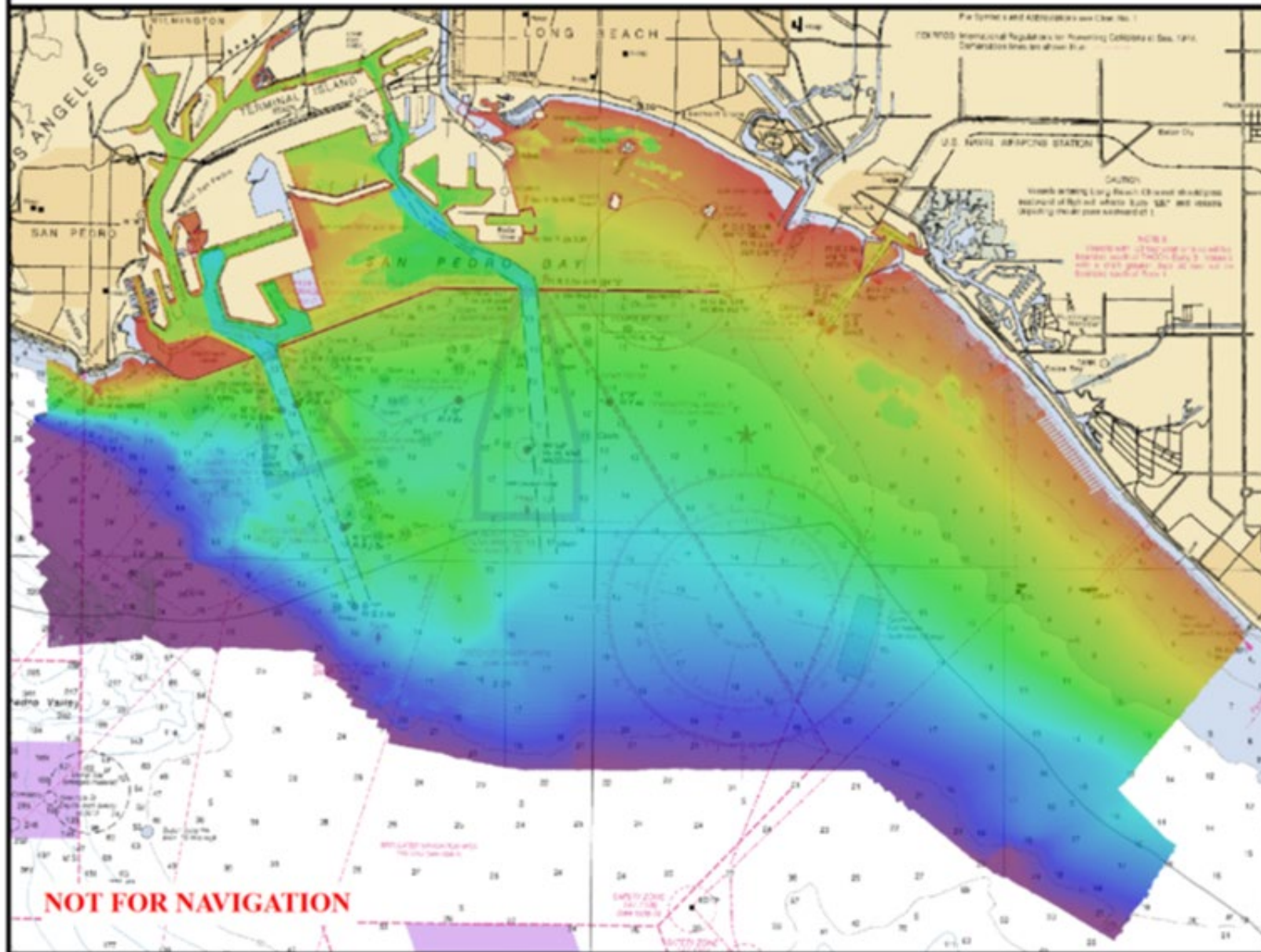
$$\text{UKC} = \text{Depth} - \text{Draft}$$



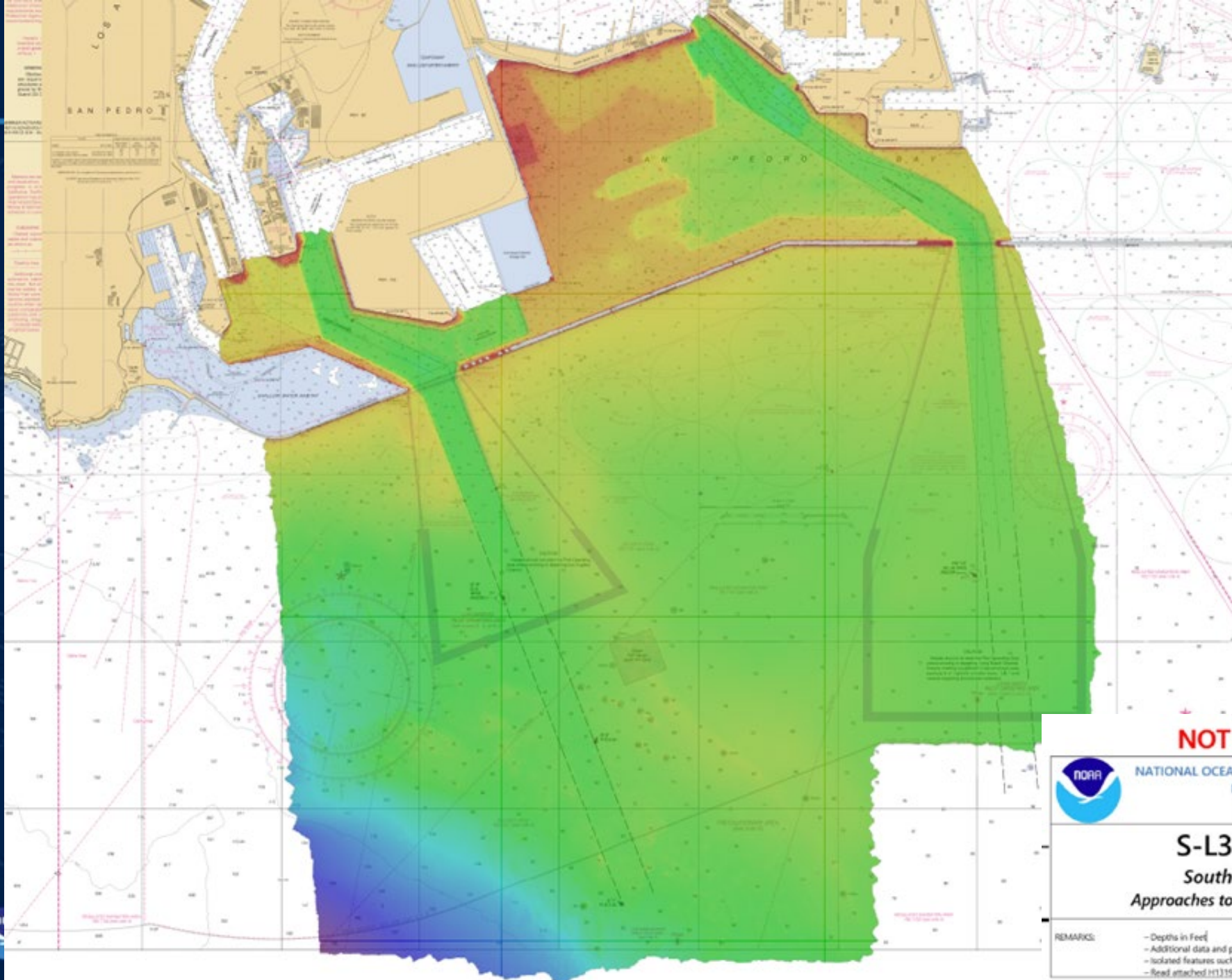
Office of Coast Survey
Approaches to LA/Long Beach, CA
OPR-L318-FA-13



Surveyed By:
NOAA Ship *Fairweather*, S220
CDR James M. Crocker, Commanding Officer
September – November 2013



NOAA



NOT FOR NAVIGATION



NATIONAL OCEANIC AND ATMOSPHERIC ADMINISTRATION
NATIONAL OCEAN SERVICE
OFFICE OF COAST SURVEY

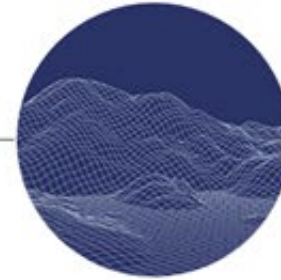


S-L318-RA-18, H13197

Southern California, California
Approaches to Ports of Los Angeles and Long Beach

REMARKS:
- Depths in Feet
- Additional data and products for this survey available <https://www.ncei.noaa.gov>
- Isolated features such as rocks, wrecks, and obstructions are not portrayed on this product
- Read attached H13197_read_me.txt for additional information

National Bathymetric Source (NBS) Product Pipelines



Navigation

- ENC
- S-102



Internal

- Planning

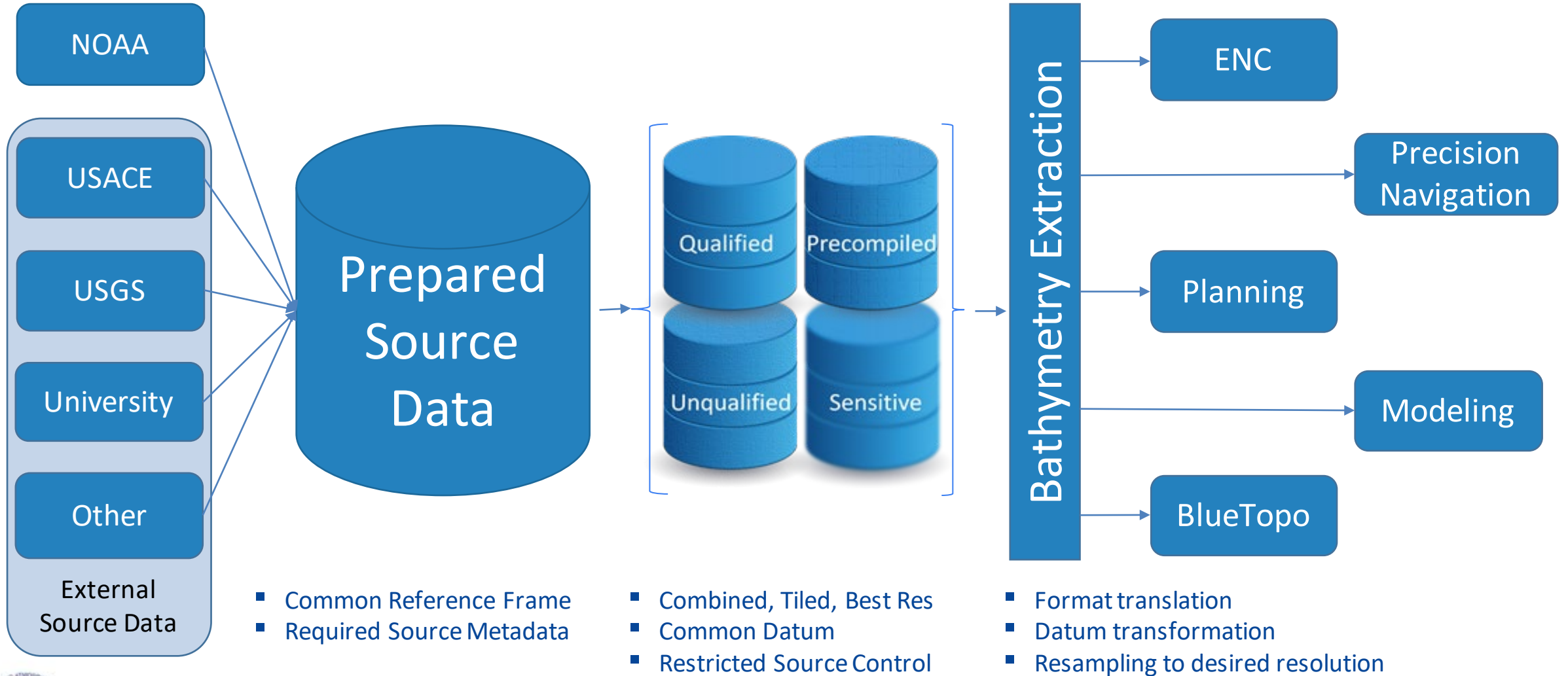


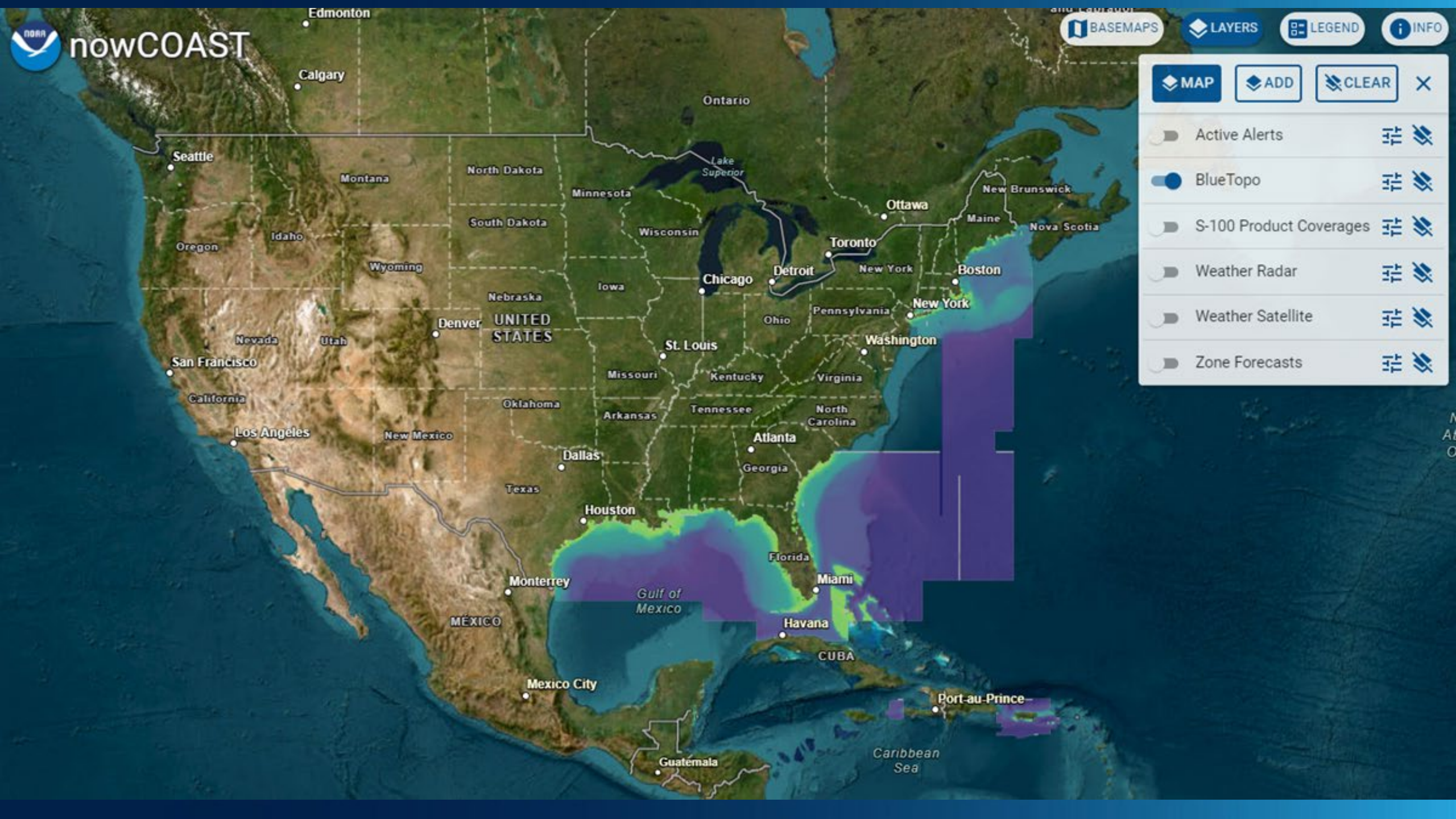
Public

- BlueTopo
- Modeling



National Bathymetric Source Workflow



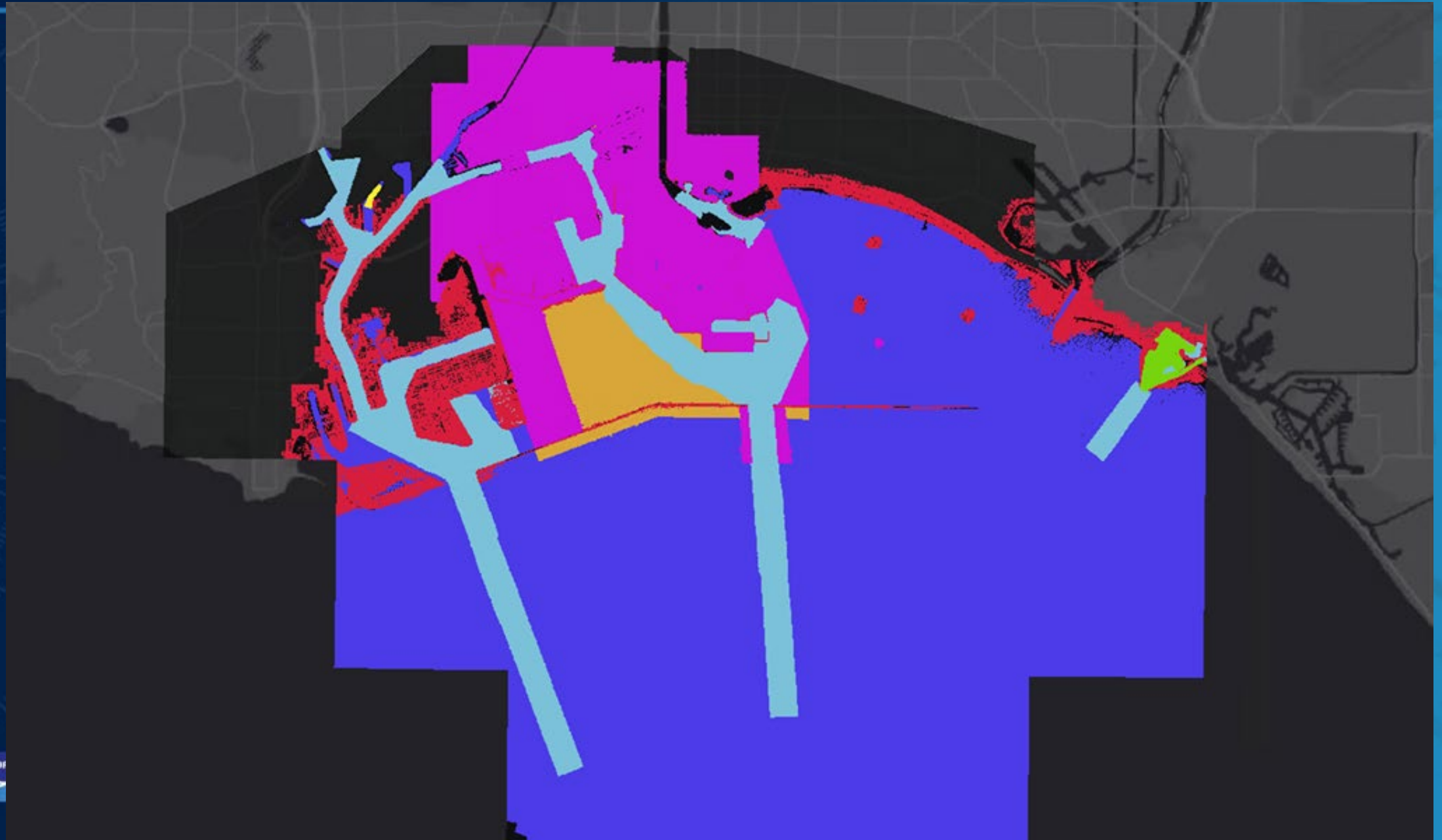




nowCOAST



Sources of Data



ENC vs S102

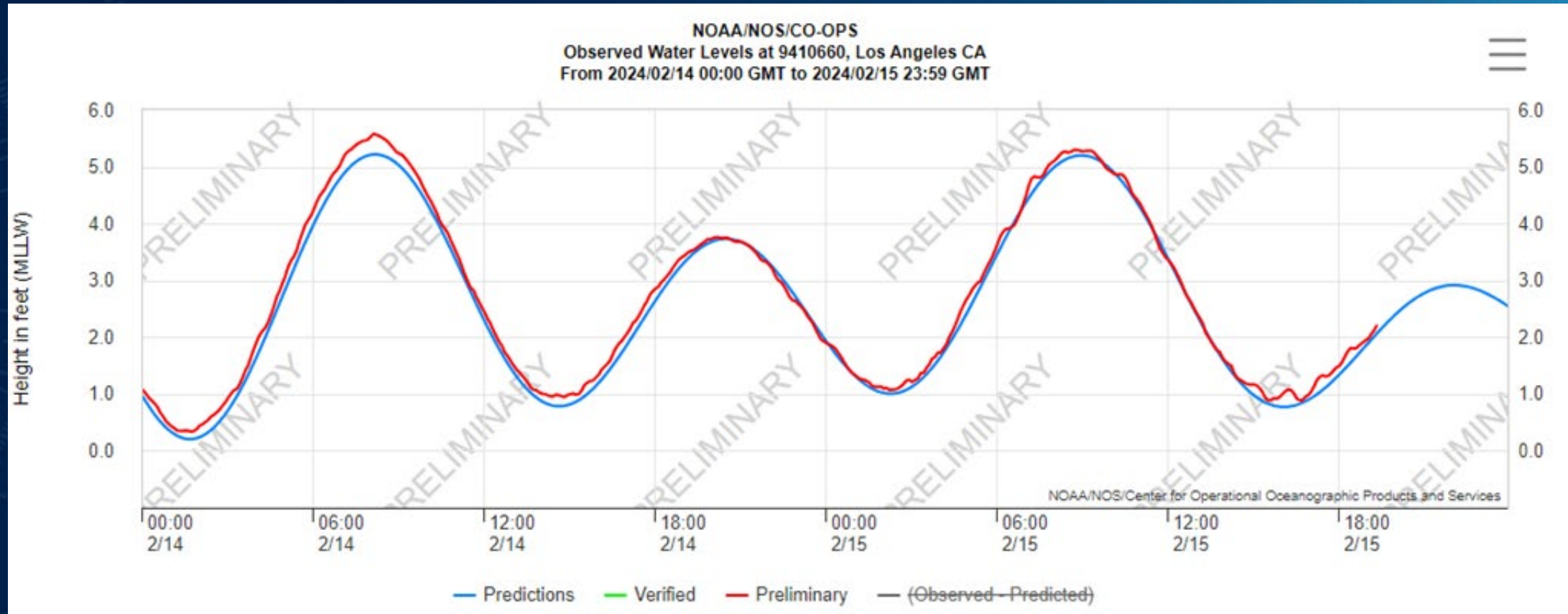


ENC vs S102



NOAA

Physical Oceanographic Real Time System (PORTS)



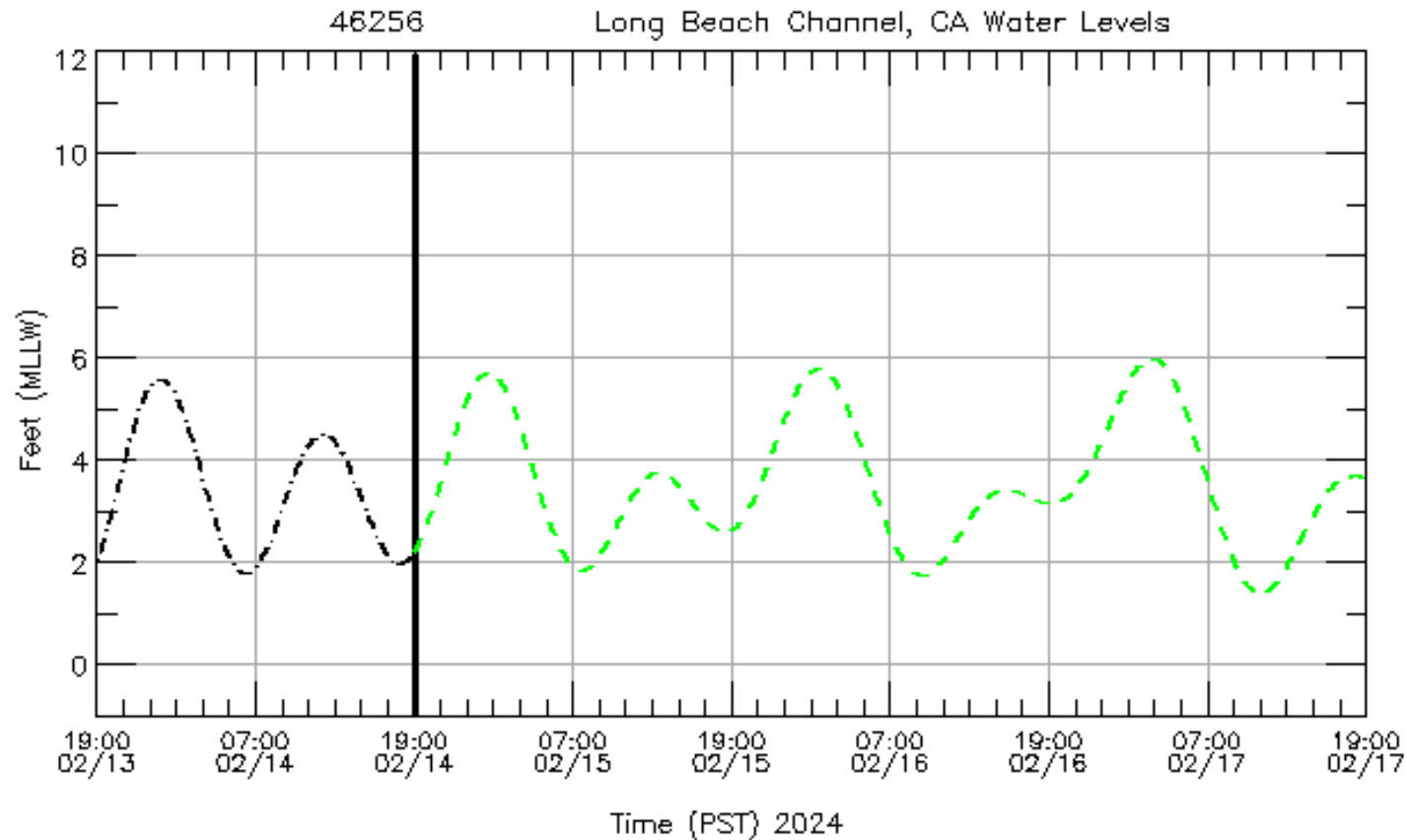
PORTS



Operational Forecast System (OFS)

NOAA/National Ocean Service
West Coast Operational
Forecast System (WCOFS)

Observation: xxxxxxx
Nowcast: -----
Forecast Guidance: -----
Tidal Prediction: -----



Regional Navigation Managers

Regional Navigation Manager Coverage

California



Name: Jeff Ferguson

Email: jeffrey.ferguson@noaa.gov

Office:

Mobile: 301-351-7798

Fax:

Bio: Jeffrey Ferguson became a Navigation Manager in 2014. He has worked for NOAA for about 30 years and has had many positions in NOAA's navigation programs; including 12 years and two sea tours as a NOAA Corps officer. Home base is Santa Barbara, CA.

