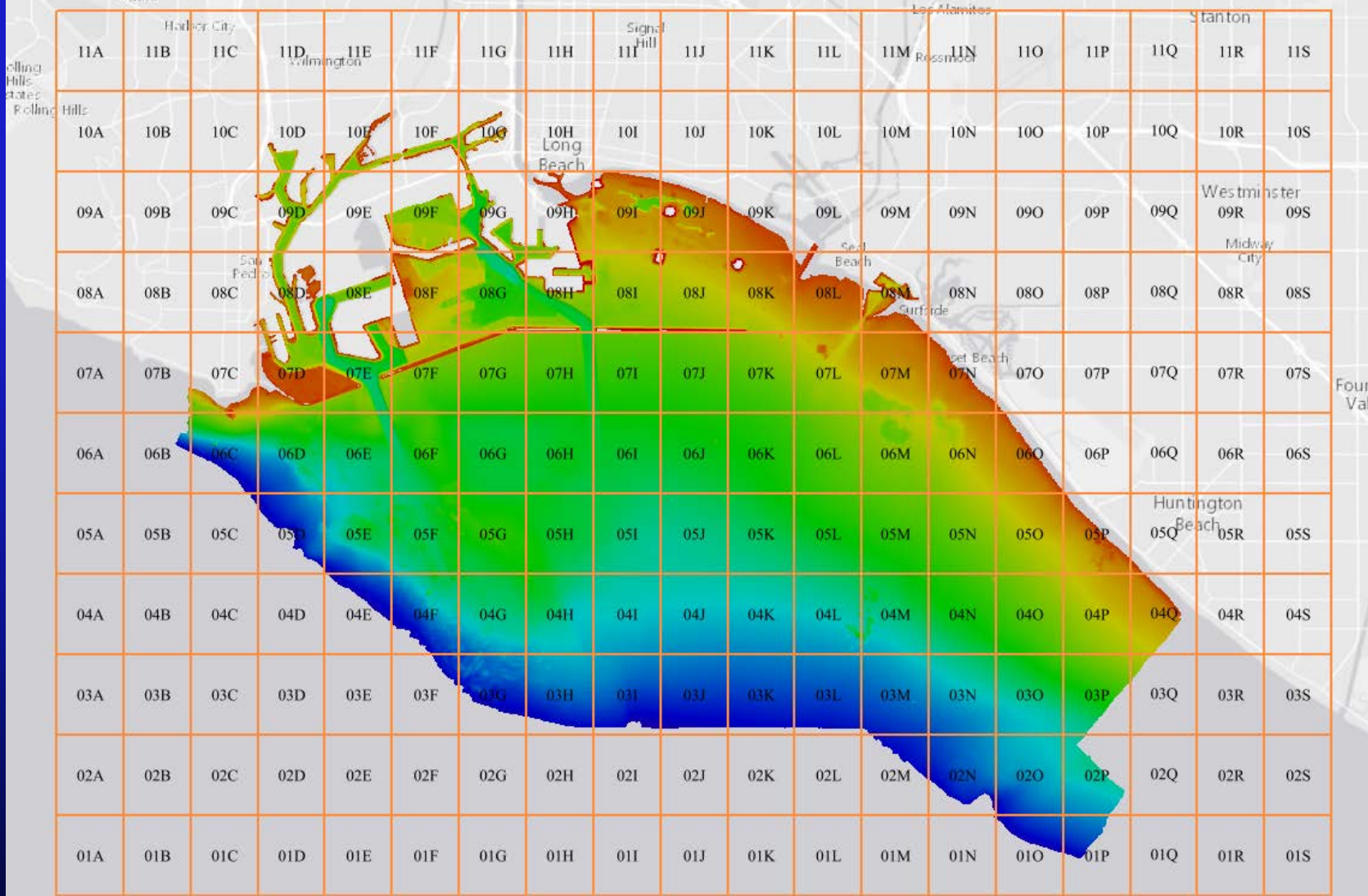
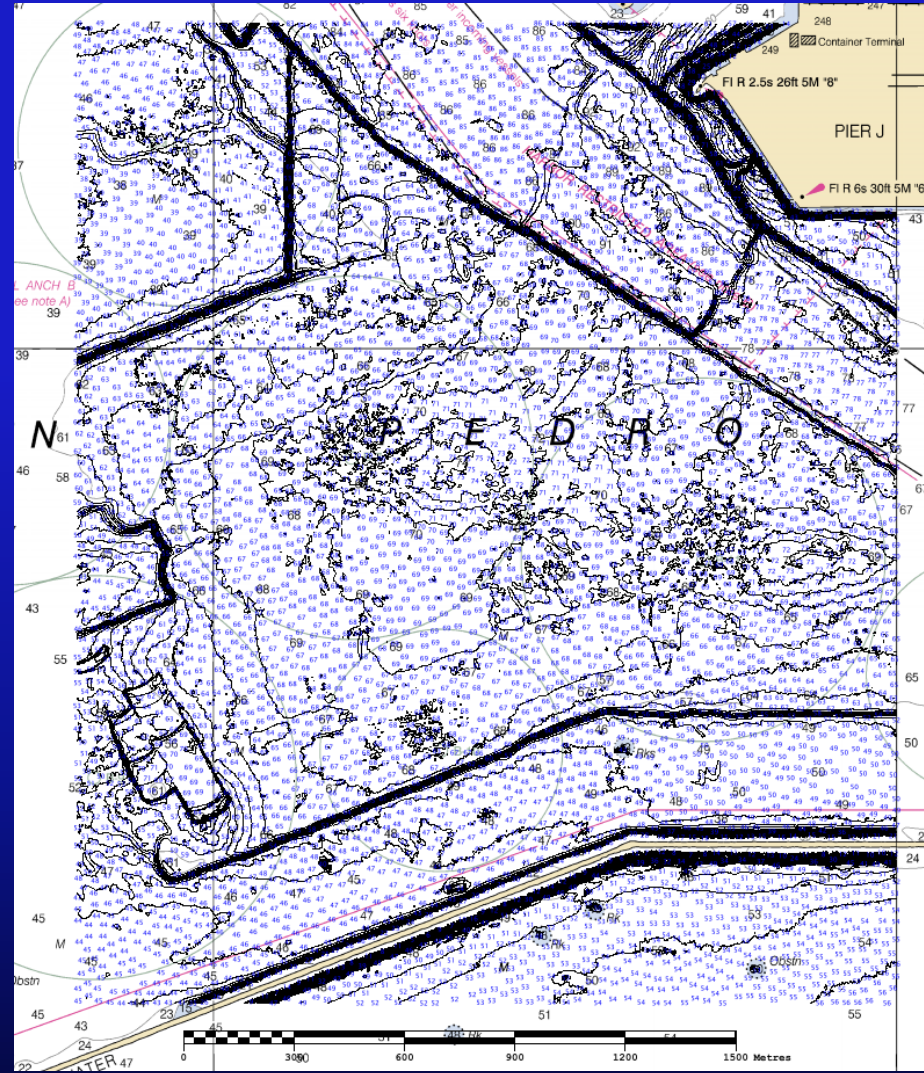
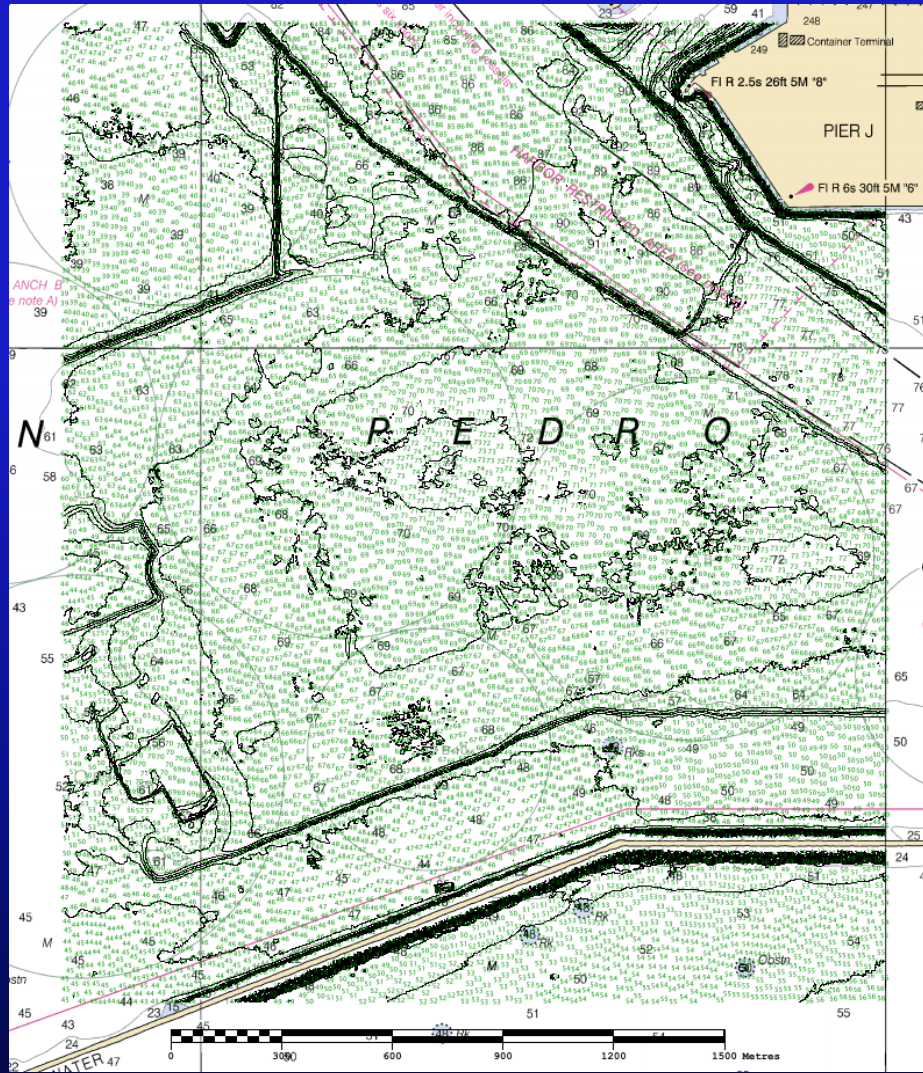
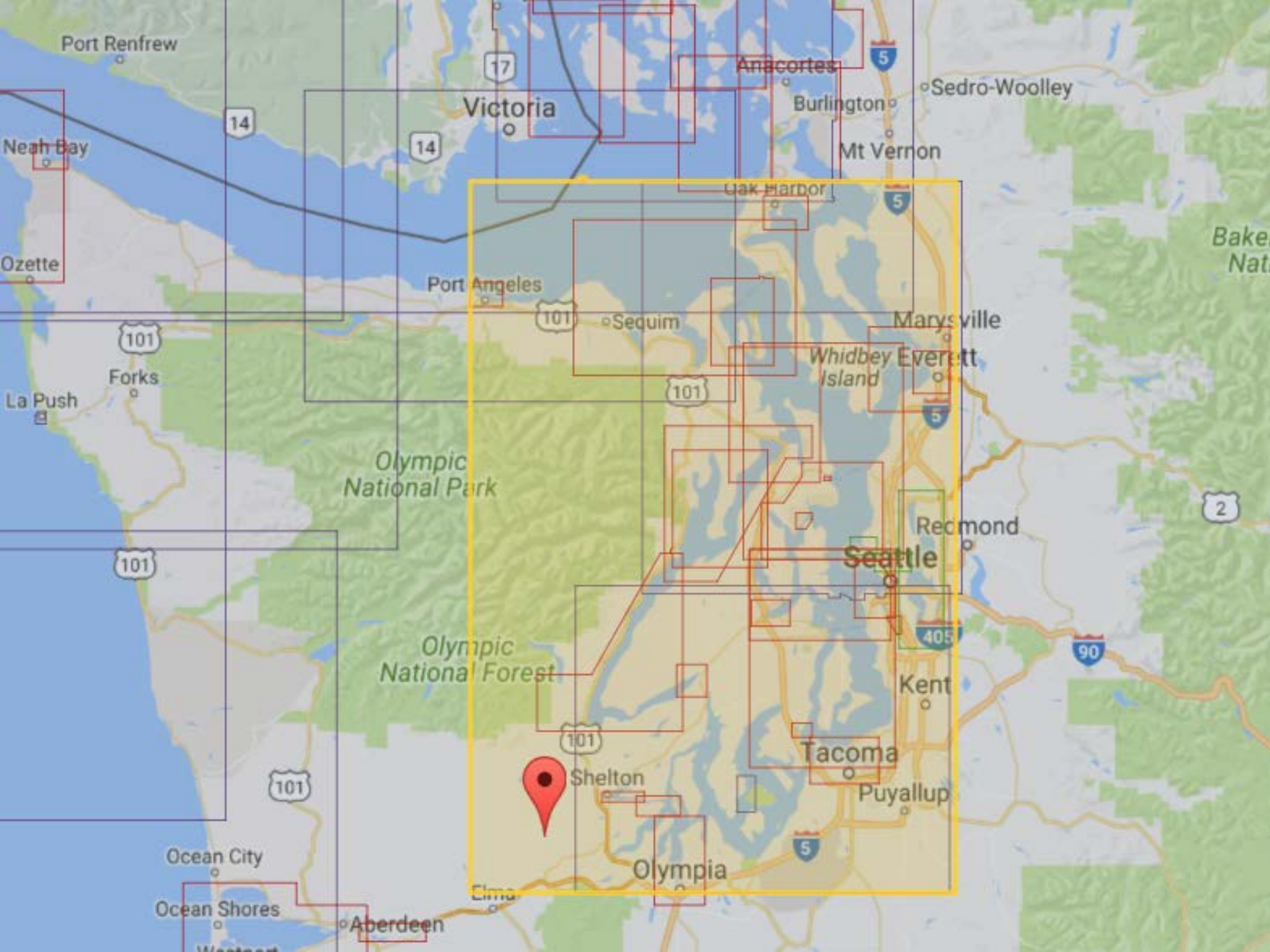


76ft (MLLW)

1°=10ft







Port Renfrew

17

Anacortes

5

Sedro-Woolley

Victoria

Burlington

Mt Vernon

14

14

Neah Bay

Oak Harbor

5

Ozette

Port Angeles

101

Sequim

Marysville

101

Forks

Whidbey Island

Everett

La Push

101

5

Olympic National Park

2

101

Seattle

Reclmond

Olympic National Forest

405

90

101

Shelton

Kent

Tacoma

Puyallup

Ocean City

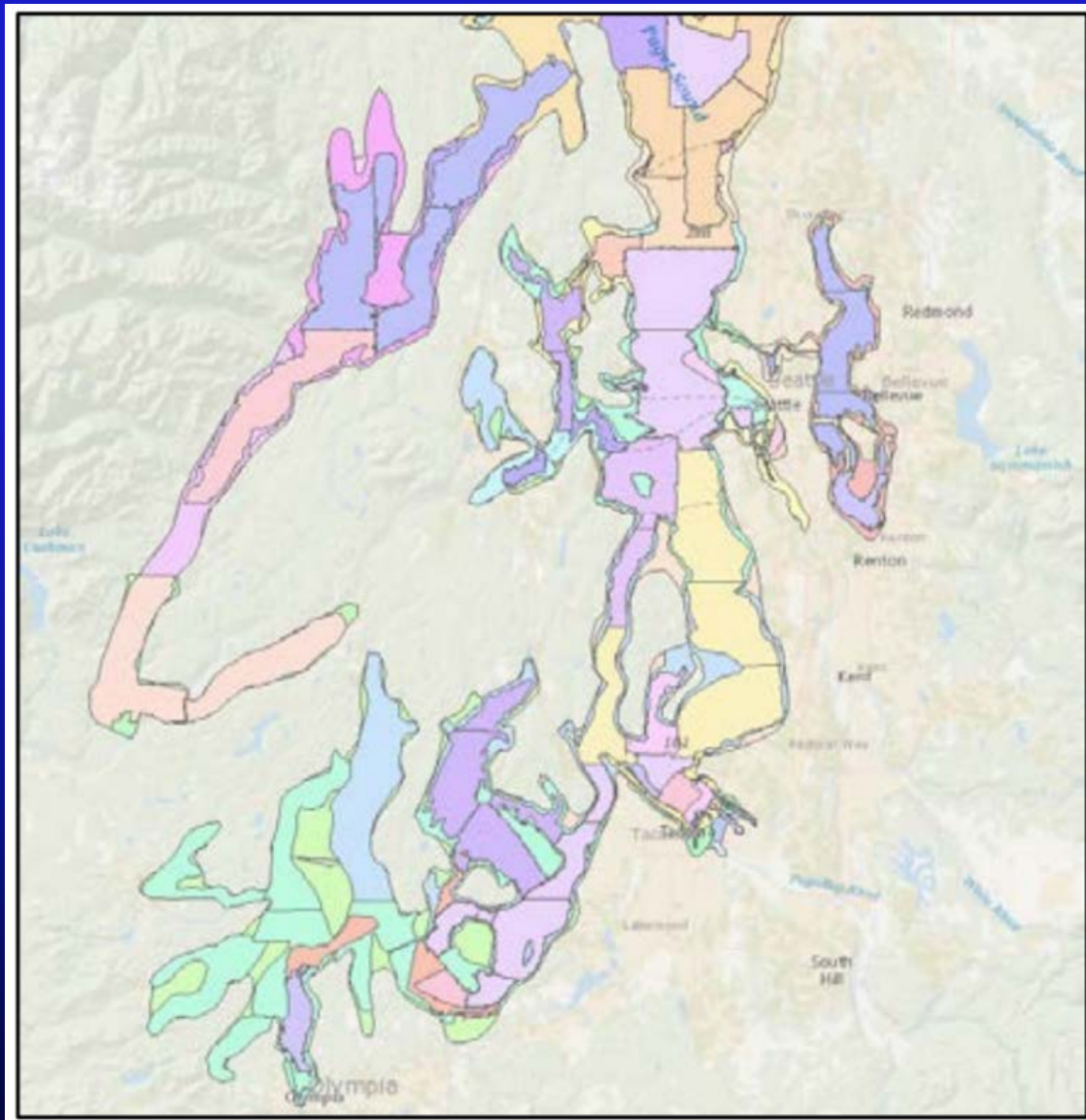
Olympia

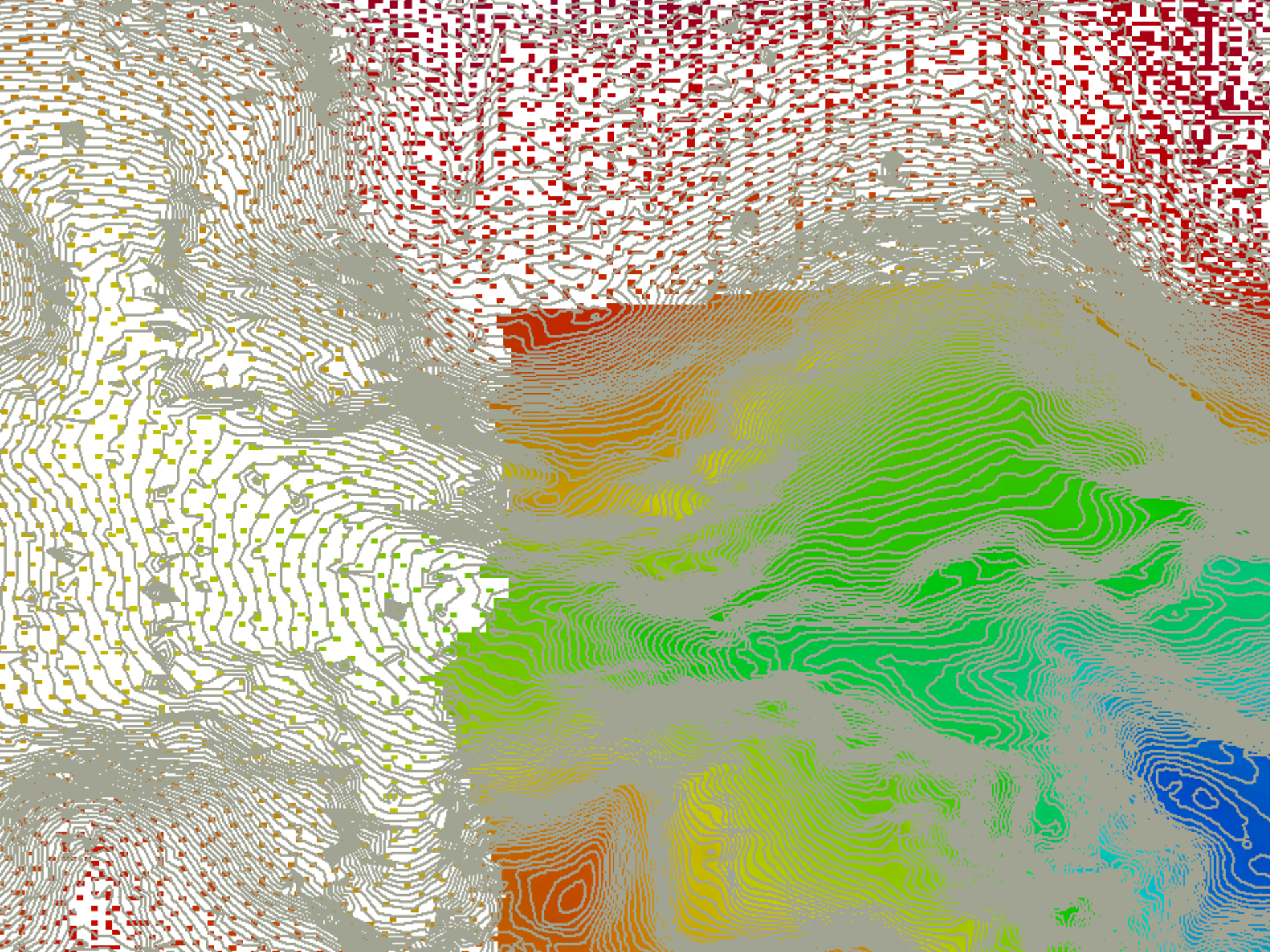
Ocean Shores

Aberdeen


Elma

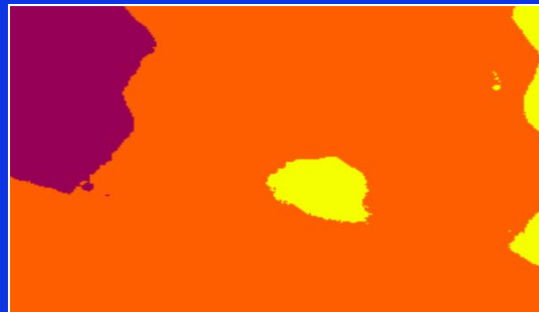
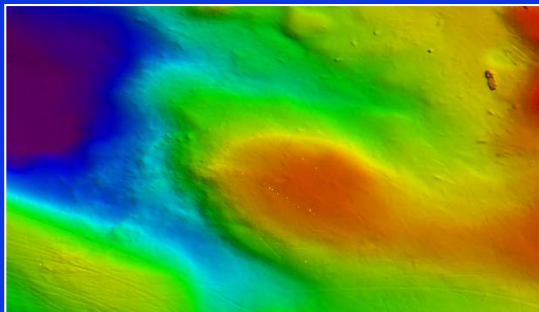
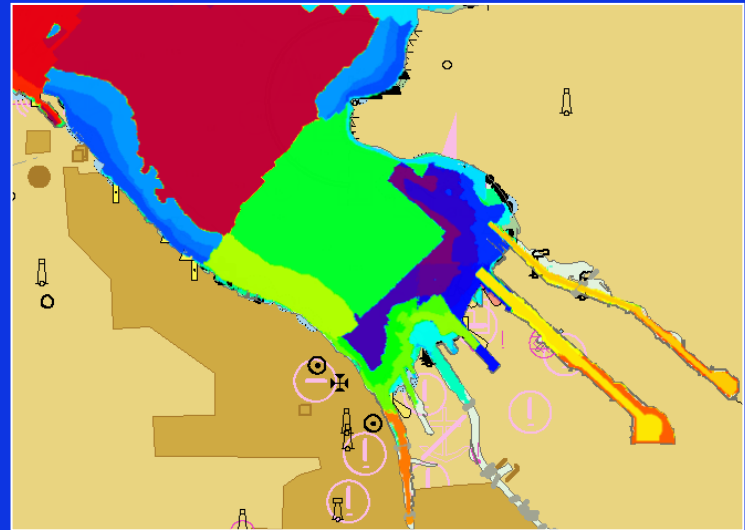
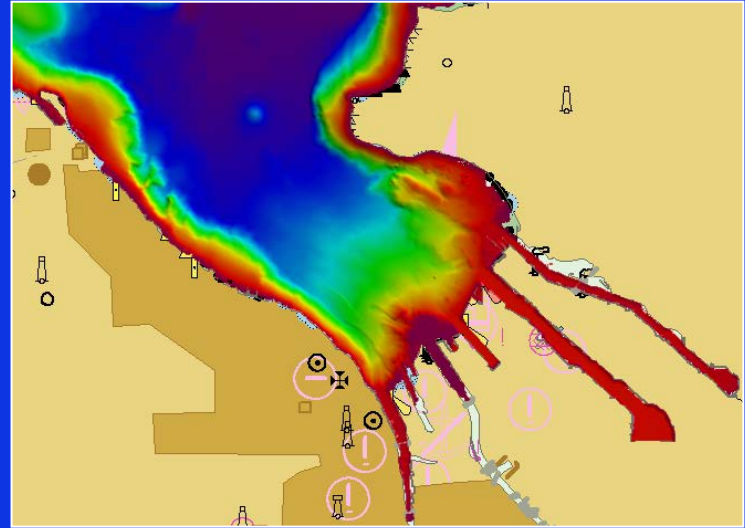
Westport





Combine Rules

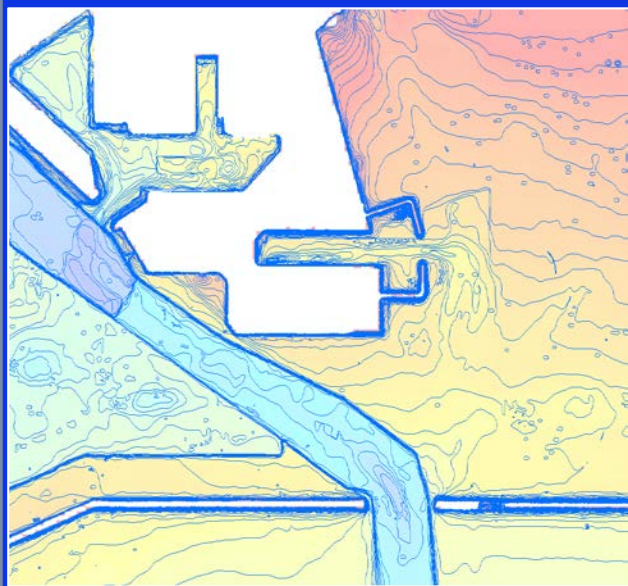
1. Danger to Navigation (T/F) 
 2. Authority (T/F)
 3. Decay Score (0-100)
 4. Best Resolution
 5. Shoal Depth
- Override ambiguity check



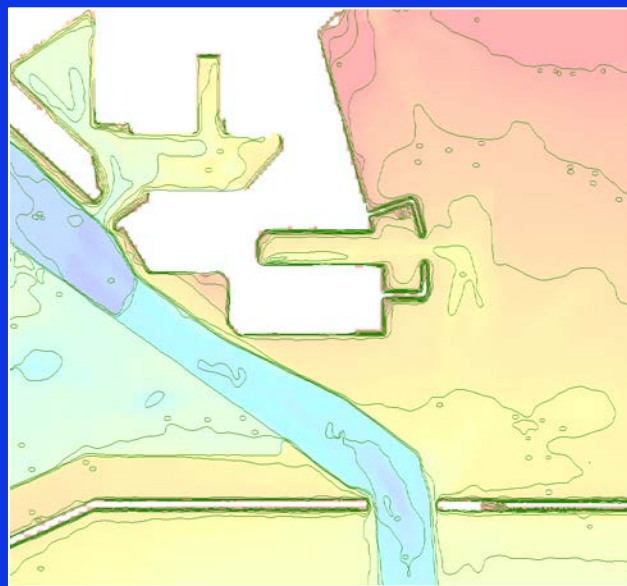
One foot vessel draft = 2,000 tons of cargo

- Wheat: \$300K/foot
- Corn: \$550K/foot
- Soybean: \$1.1M/foot

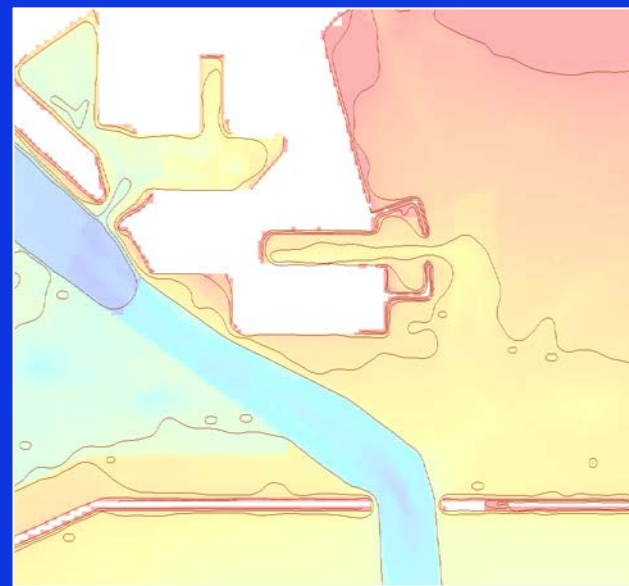
**One foot of ULCC = 40,000 barrels
@\$50/barrel = \$2M**



1:10,000



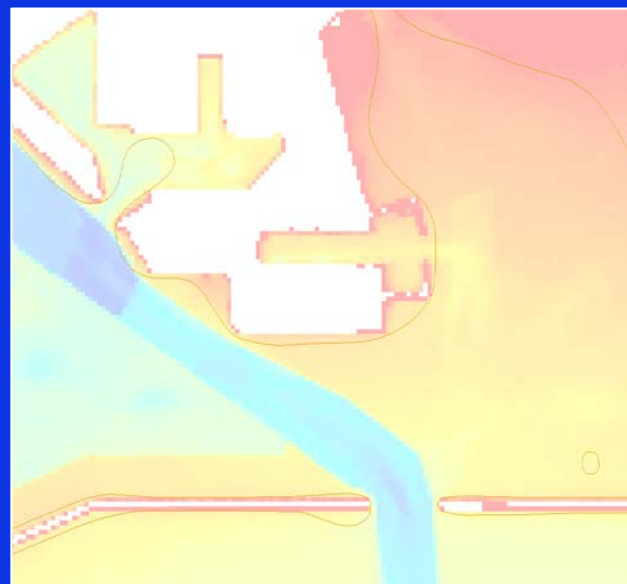
1:12,000



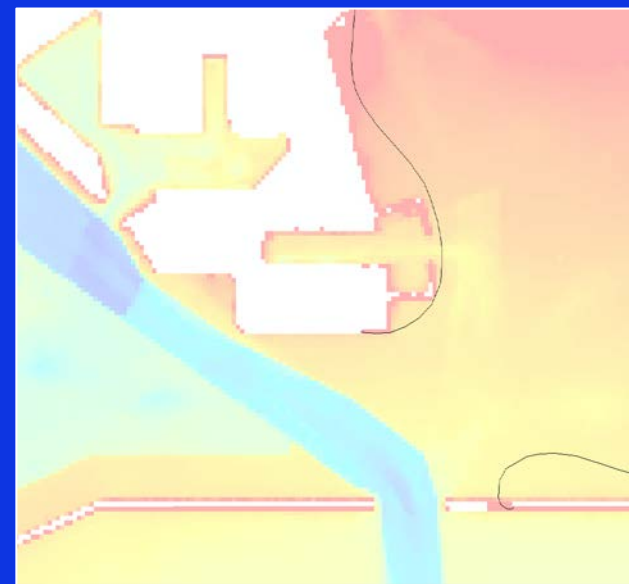
1:22,500



1:45,000



1:90,000



1:180,000