

# NATIONAL CHARTING PLAN

*A strategy to transform nautical charting*

Travis Newman  
Marine Chart Division

Hydrographic Services Review Panel  
Seattle, WA April 2017



Office of Coast Survey  
National Oceanic and Atmospheric Administration

# NATIONAL CHARTING PLAN

*A strategy to transform nautical charting*

**Purpose** Improve NOAA nautical chart coverage, products, and distribution

## Improvements

Reduce  
unwarranted  
alarms



Convert to metric



Provide  
timelier data



Improve  
chart coverage



Create an  
orderly layout



Reduce  
uncertainties



Improve chart  
update information



Increase  
efficiency



**Outcome** Ease of access to more precise, higher-resolution charts that deliver the most up-to-date navigation information possible

*Provide feedback by June 1, 2017*     <https://www.federalregister.gov/d/2017-03936>



Office of Coast Survey  
National Oceanic and Atmospheric Administration

# Improving Chart Updates



## Improve chart update information


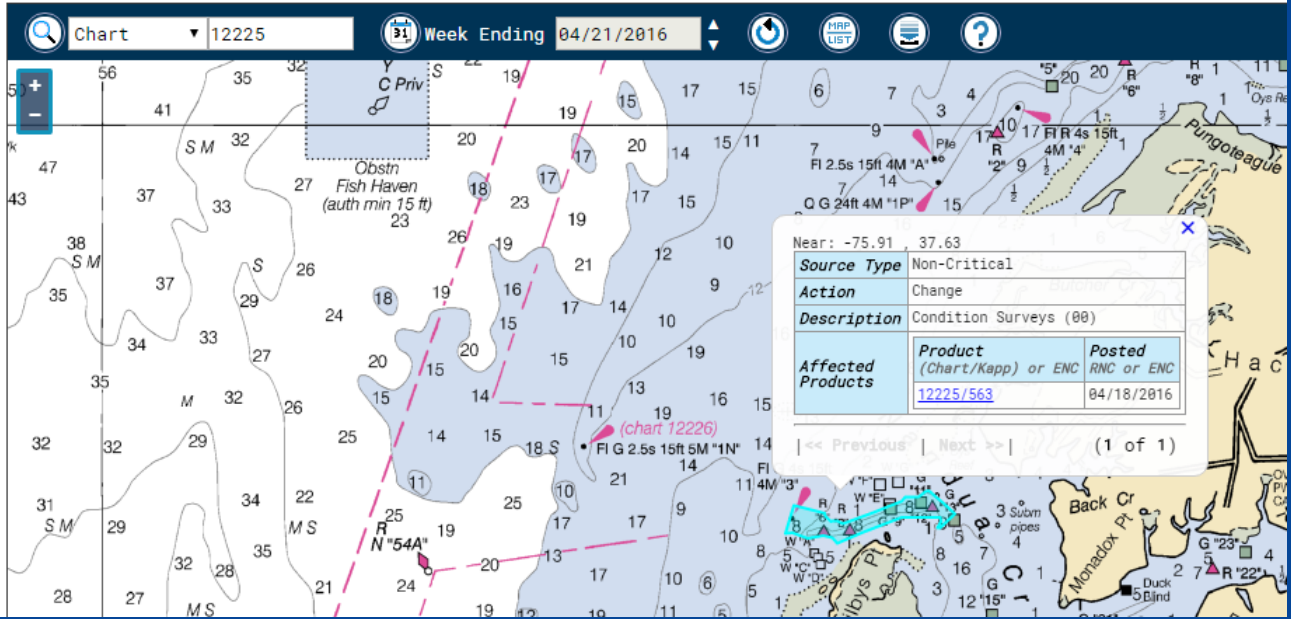
 **Charting Products - Weekly Updates**  
from Critical & Non-Critical Sources

Chart: 12225    Week Ending: 04/21/2016

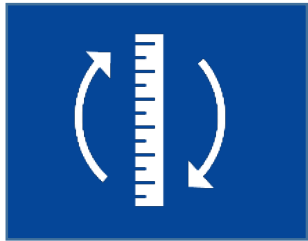


<b>Source Type</b>	Non-Critical	
<b>Action</b>	Change	
<b>Description</b>	Condition Surveys (00)	
<b>Affected Products</b>	<b>Product</b> (Chart/Kapp) or ENC	<b>Posted</b> RNC or ENC
	<a href="#">12225/563</a>	04/18/2016

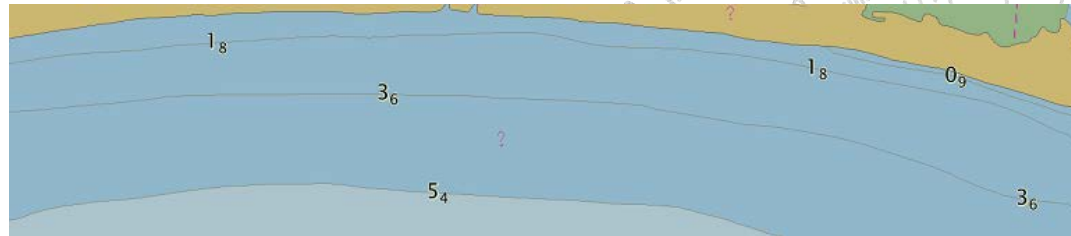
1 of 1



# Improving Chart Content



Convert to metric



Reduce unwarranted alarms & isolated danger symbolization



ECDIS display of wrecks with an "isolated danger" symbol



"Normal" ECDIS display of the same two "non-dangerous" and one "dangerous" wrecks



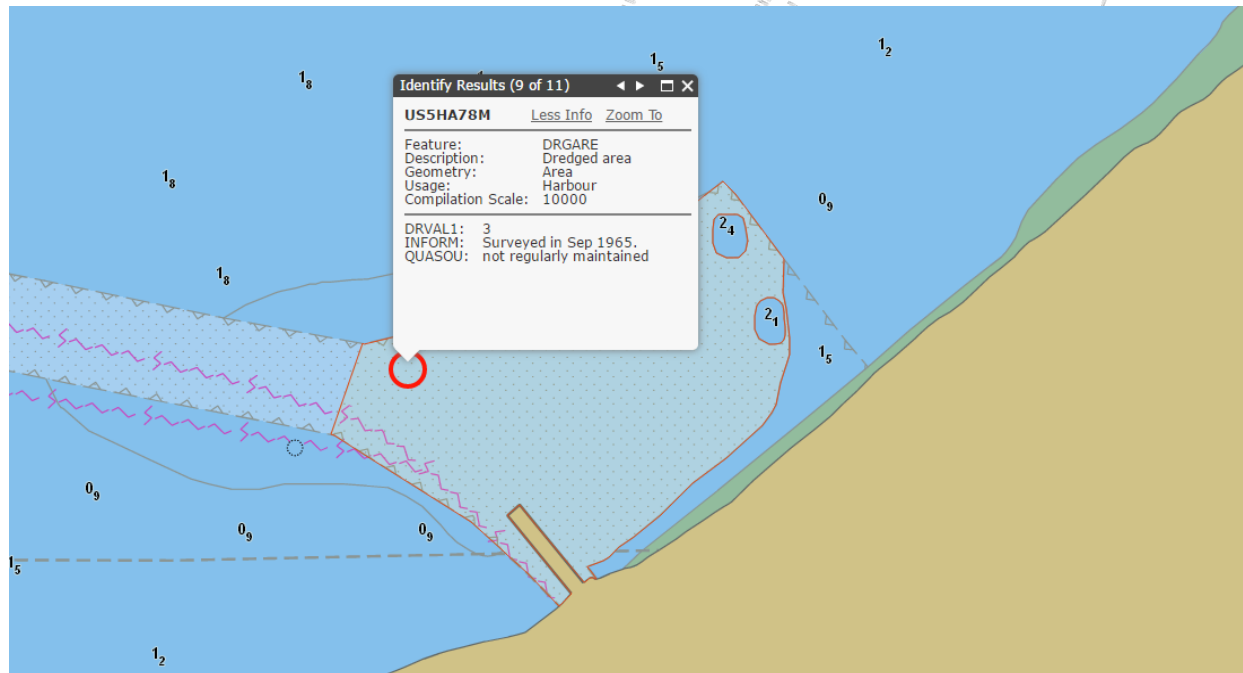


# Improving Chart Content



Provide timelier data

Standardization of USACE data formats



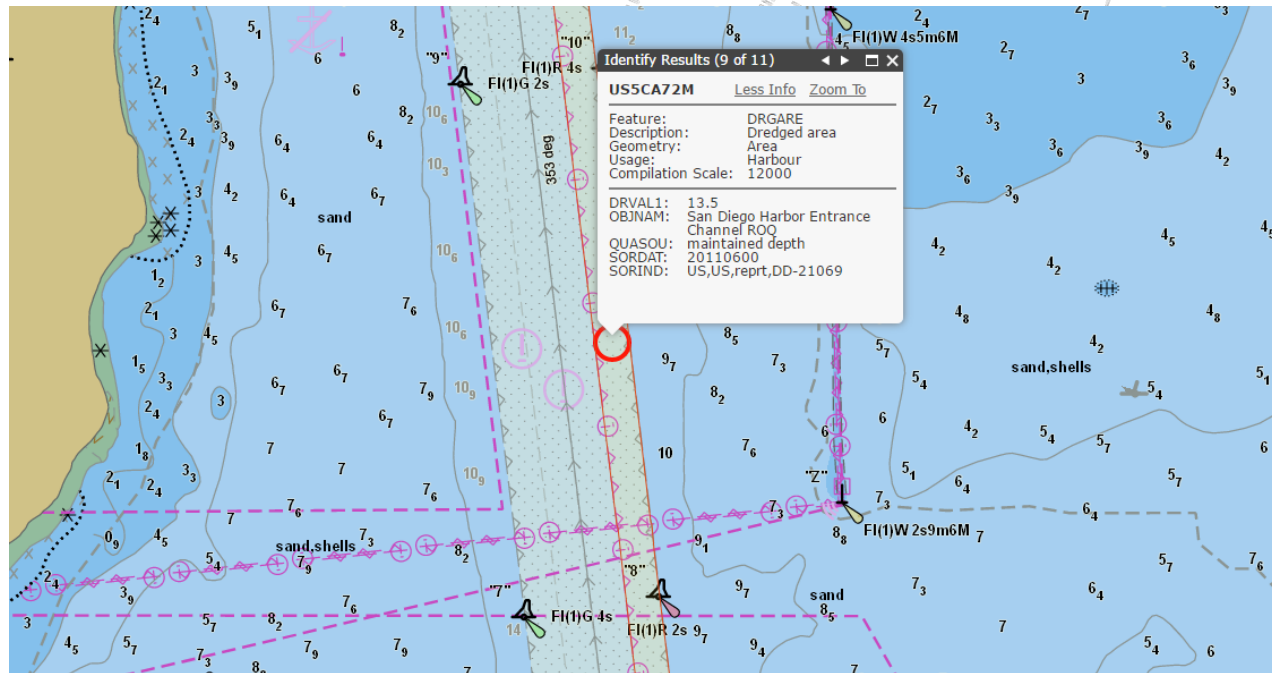
Office of Coast Survey  
National Oceanic and Atmospheric Administration

# Improving Chart Content



Provide timelier data

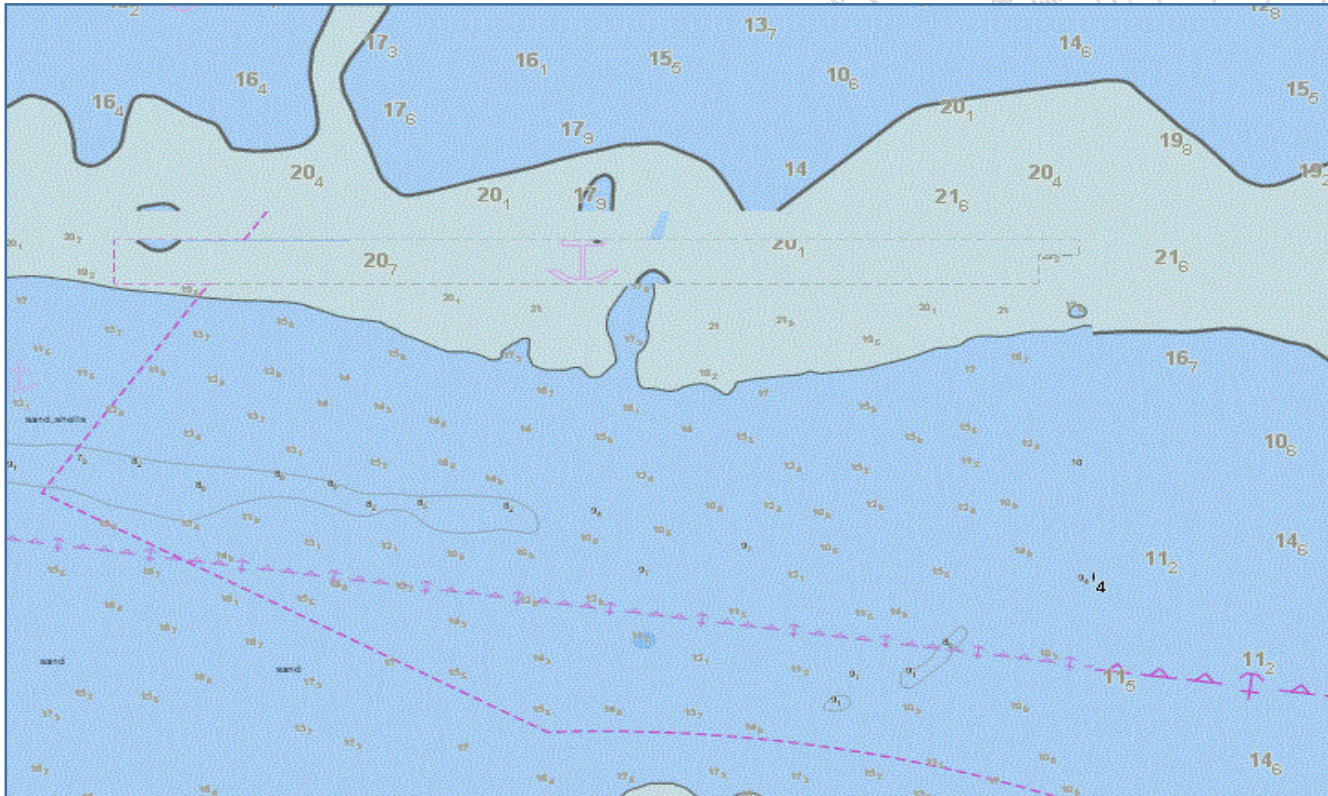
Standardization of USACE data formats



Office of Coast Survey  
National Oceanic and Atmospheric Administration

# Improving Chart Content

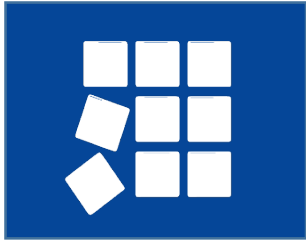
## Data Consistency and general ENC clean-up



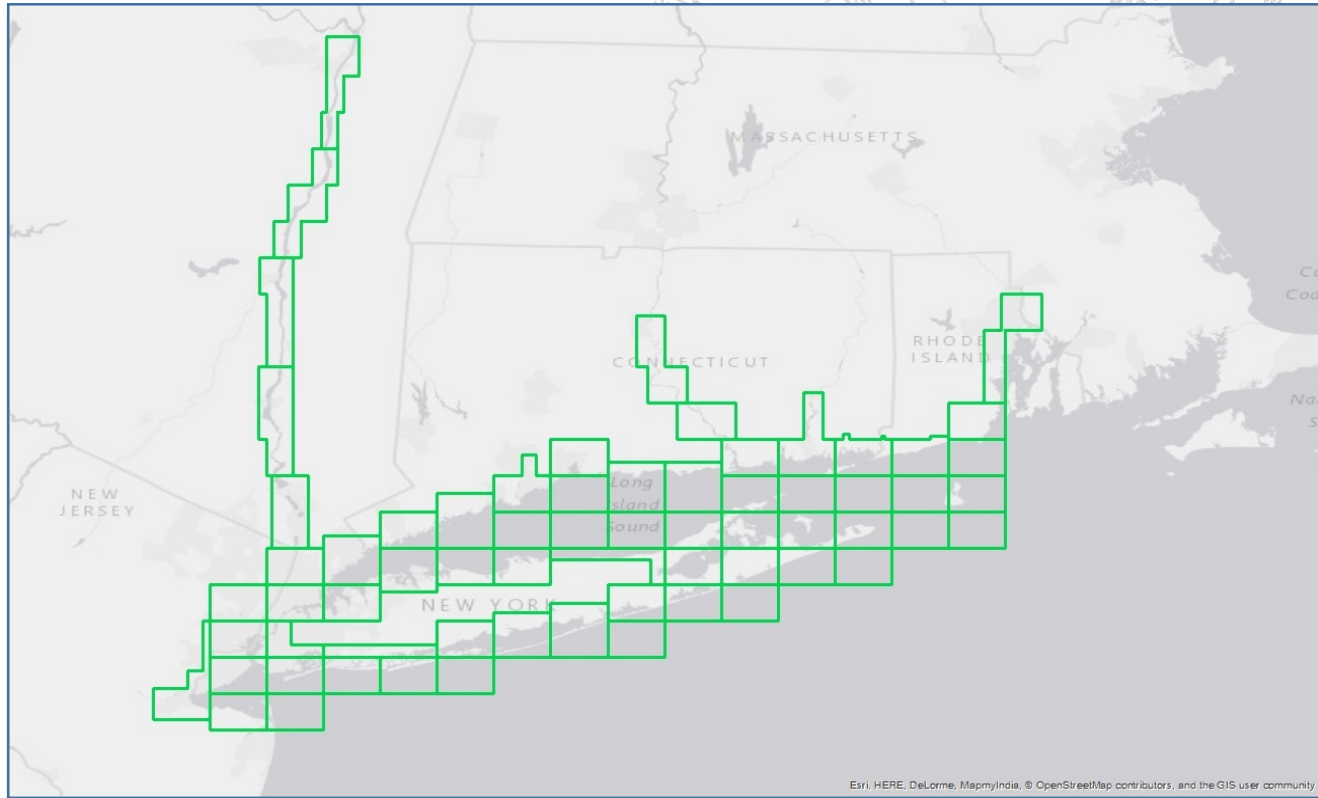
Office of Coast Survey  
National Oceanic and Atmospheric Administration



# Improving Chart Schemes

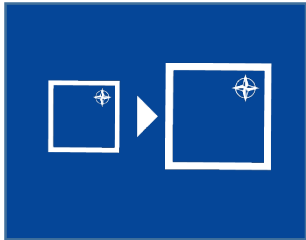


Create an orderly layout for ENCs

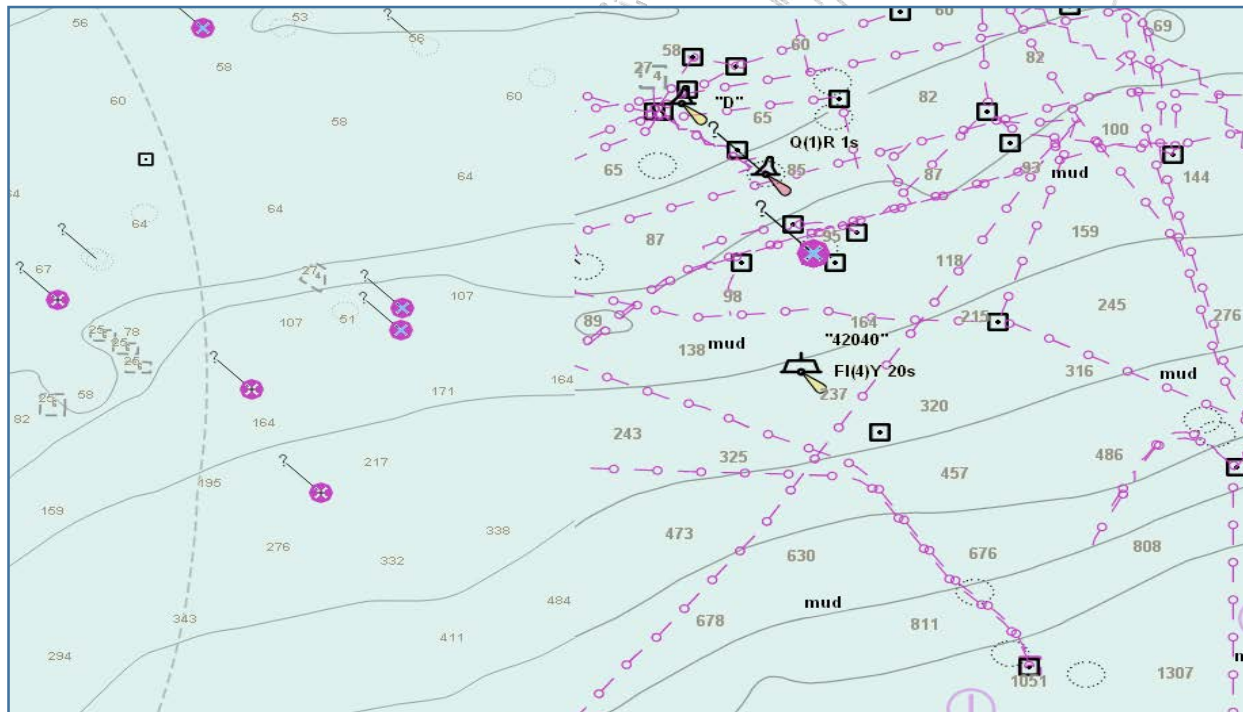


Office of Coast Survey  
National Oceanic and Atmospheric Administration

# Improving Chart Schemes

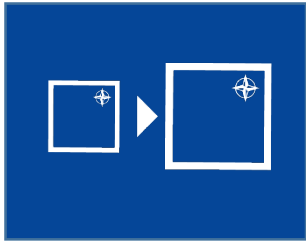


## Standardize Scales

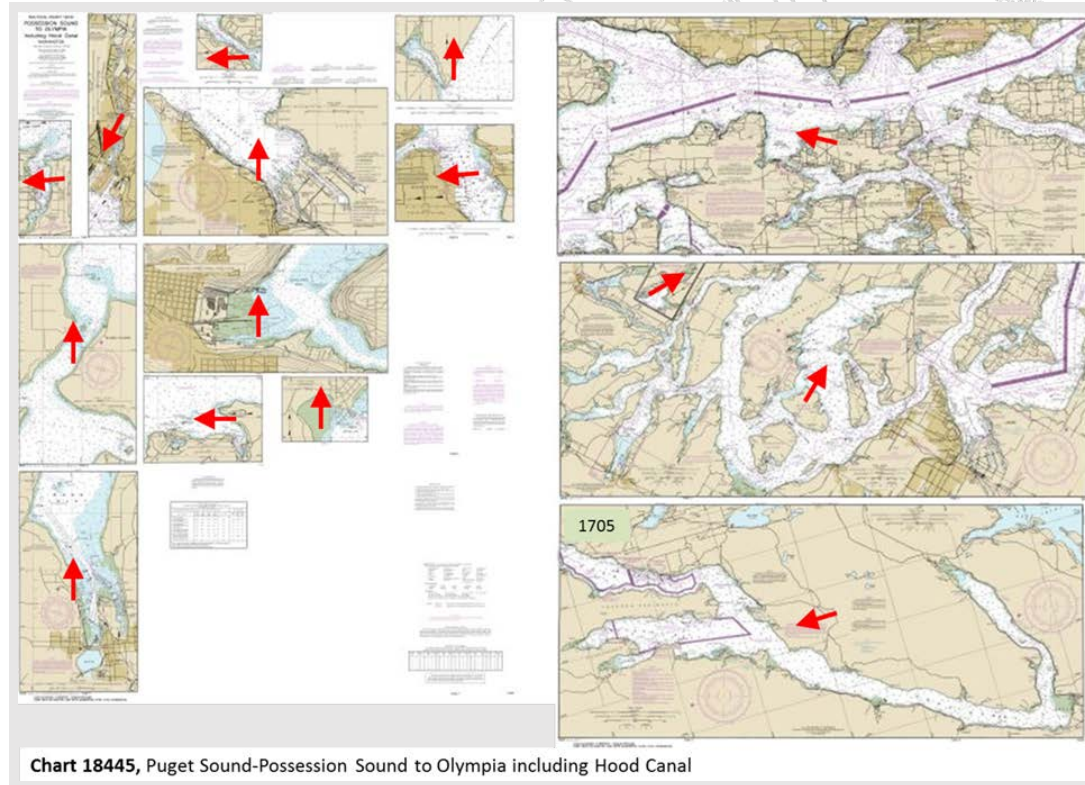


Office of Coast Survey  
National Oceanic and Atmospheric Administration

# Improving Chart Schemes

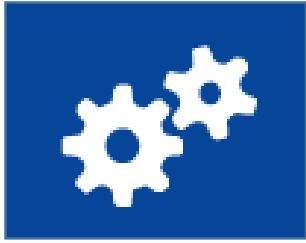


## Improve chart coverage



Office of Coast Survey  
National Oceanic and Atmospheric Administration

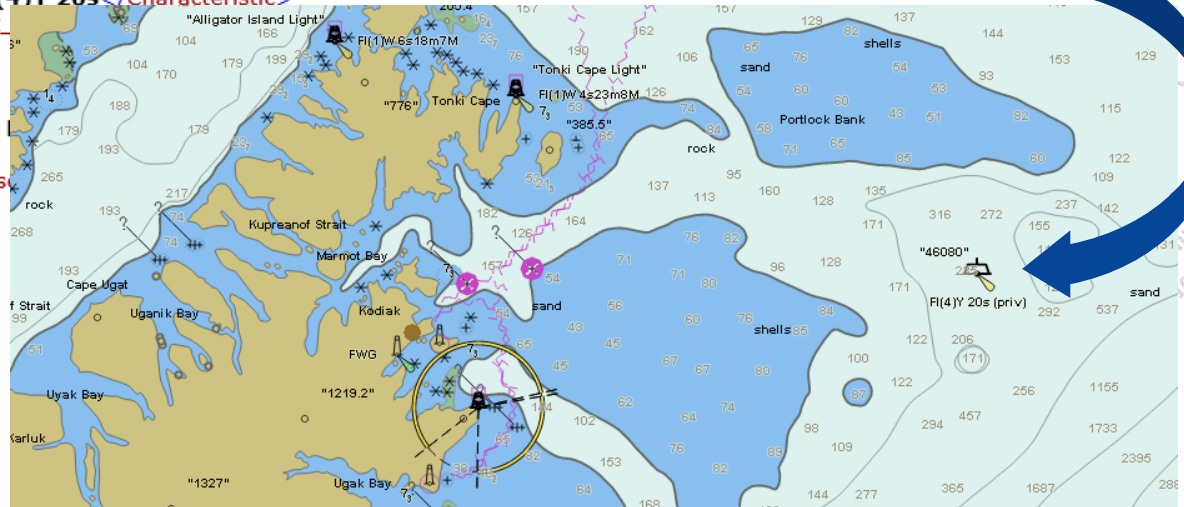
# Improving Chart Production Efficiency



Increase efficiency

Direct input of USCG light list data into production

```
<District>17</District>  
<LLNR>982</LLNR>  
<XREF/>  
<Aid_x0020_Name>NOAA Data Lighted Buoy 46080</Aid_x0020_Name>  
<Aid_x0020_Type>FD</Aid_x0020_Type>  
<Position_x0020__x0028_Latitude_x0029_>57-56-20.804N</Position_x0020__x0028_Latitude_x0029_>  
<Position_x0020__x0028_Longitude_x0029_>149-57-36.680W</Position_x0020__x0028_Longitude_x0029_>  
<Characteristic>FI (4)Y 20s</Characteristic>  
<Both_x002F_Night_>  
<Height/>  
<Range/>  
<Location/>  
<Structure>Yellow  
<Remarks/>  
<RACN_x0020_Mors
```





Office of Coast Survey  
National Oceanic and Atmospheric Administration

# Marine Spatial Data Infrastructure

## Open data policy MSDI

### Electronic Navigational Chart Themes

Extracted at run time and updated weekly with latest edition ENC Cells.

Title	Source	ArcGIS Viewer	REST Service	Web Map Service	KML	Download Shapefiles	Download Metadata
Coastal Maintained Channels	OCS						
U.S. Maritime Limits & Boundaries	OCS						
Shipping Lanes and Regulations	OCS						

To access the **Graphical Interface**, [return to the NOAA ENC® Direct to GIS home page.](#)



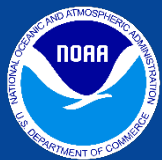
# User Feedback

## How to Provide Comments on this Charting Plan

You are invited to comment on the National Charting Plan through NOAA's Nautical Discrepancy Report System at:

<http://ocsddata.ncd.noaa.gov/idrs/discrepancy.aspx>

Feedback may also be sent to:  
National Ocean Service, NOAA (N/CS2)  
ATTN: National Charting Plan  
1315 East West Highway Silver Spring, MD 20910-3282



Office of Coast Survey  
National Oceanic and Atmospheric Administration